

**WINDOW FLASHING SYSTEM
INSTALLATION INSTRUCTIONS**

FOR

**PUNCHED WINDOW OPENINGS
WITH LOOSE STEEL LINTELS IN
BUILDING ENCLOSURE SYSTEMS
WITH AIR AND VAPOR BARRIER
SYSTEMS AND CAVITY INSULATION**

Offered By:

EXO-TEC Manufacturing, Inc.

22 Washington Street

Stoughton, MA 02072

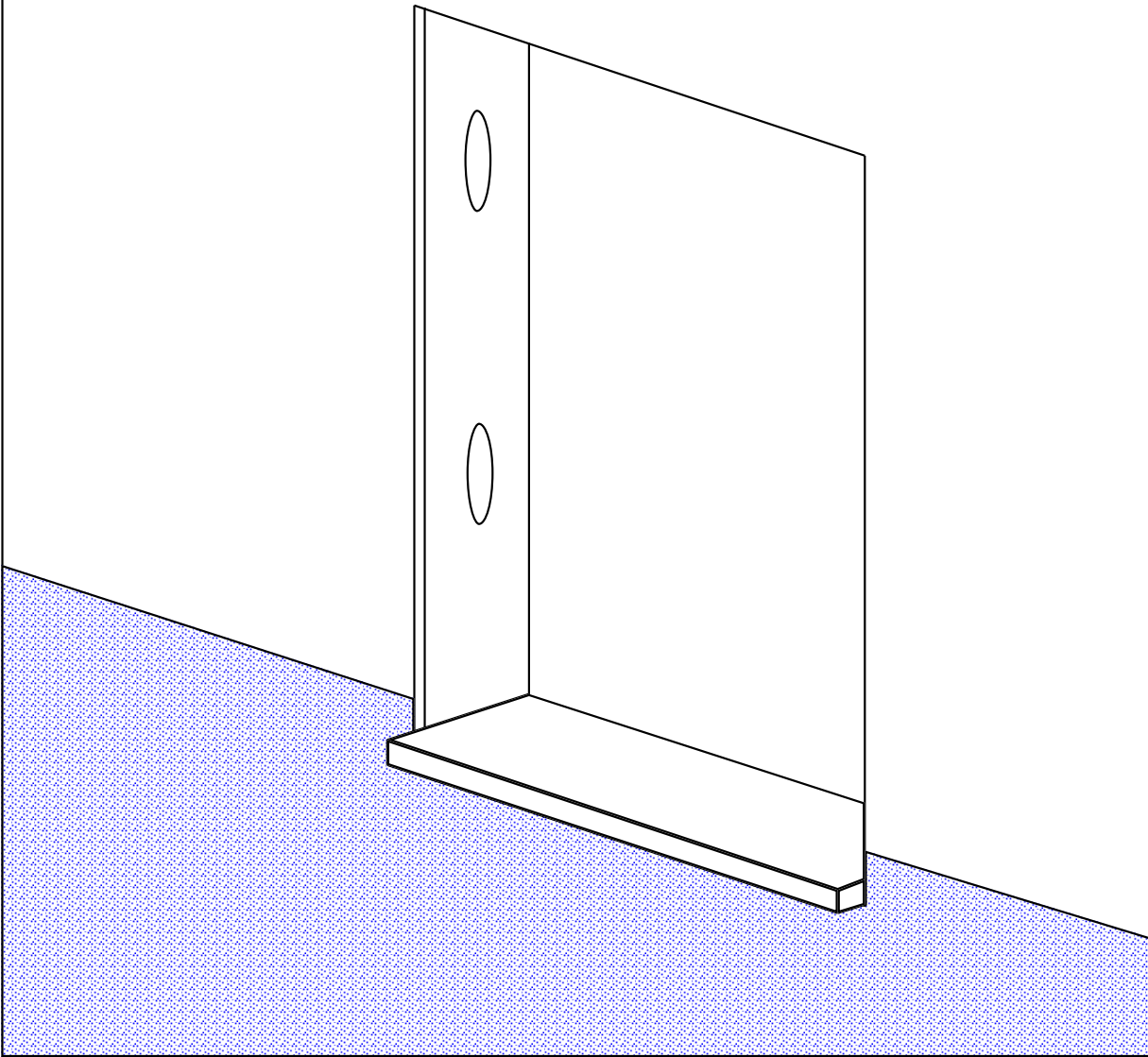
(781) 344-9794

Fax (781) 344-9823

<http://www.exo-tec.biz>

E-Mail: len@exo-tec.biz

1.) INSTALL THE WATER, AIR
OR AIR / VAPOR BARRIER
TO VICINITY OF THE
WINDOW SILL HEIGHT.



EXO-TEC MANUFACTURING, INC.

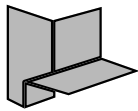
294 PLEASANT ST. SUITE 203A, STOUGHTON, MA 02072

(781) 344-9794 FAX (781) 344-9823

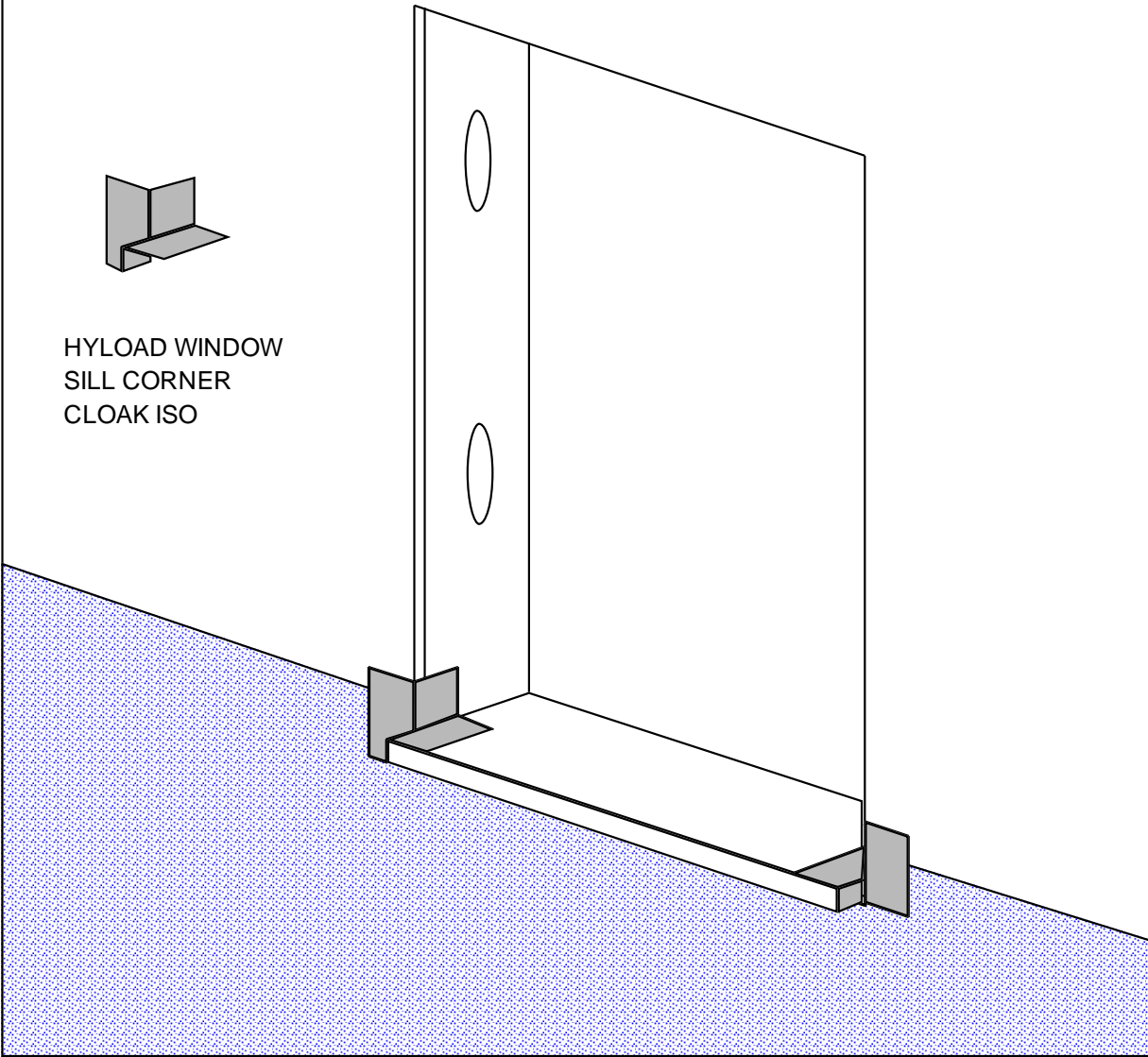
www.exo-tec.biz

WINDOW FLASHING SYSTEM INSTALLATION: STEP 1

2.) INSTALL HYLOAD WINDOW
SILL CORNER CLOAKS SET IN A
FULL BED OR A CONTINUOUS
BEAD OF HYLOAD ADHESIVE.



HYLOAD WINDOW
SILL CORNER
CLOAK ISO



EXO-TEC MANUFACTURING, INC.

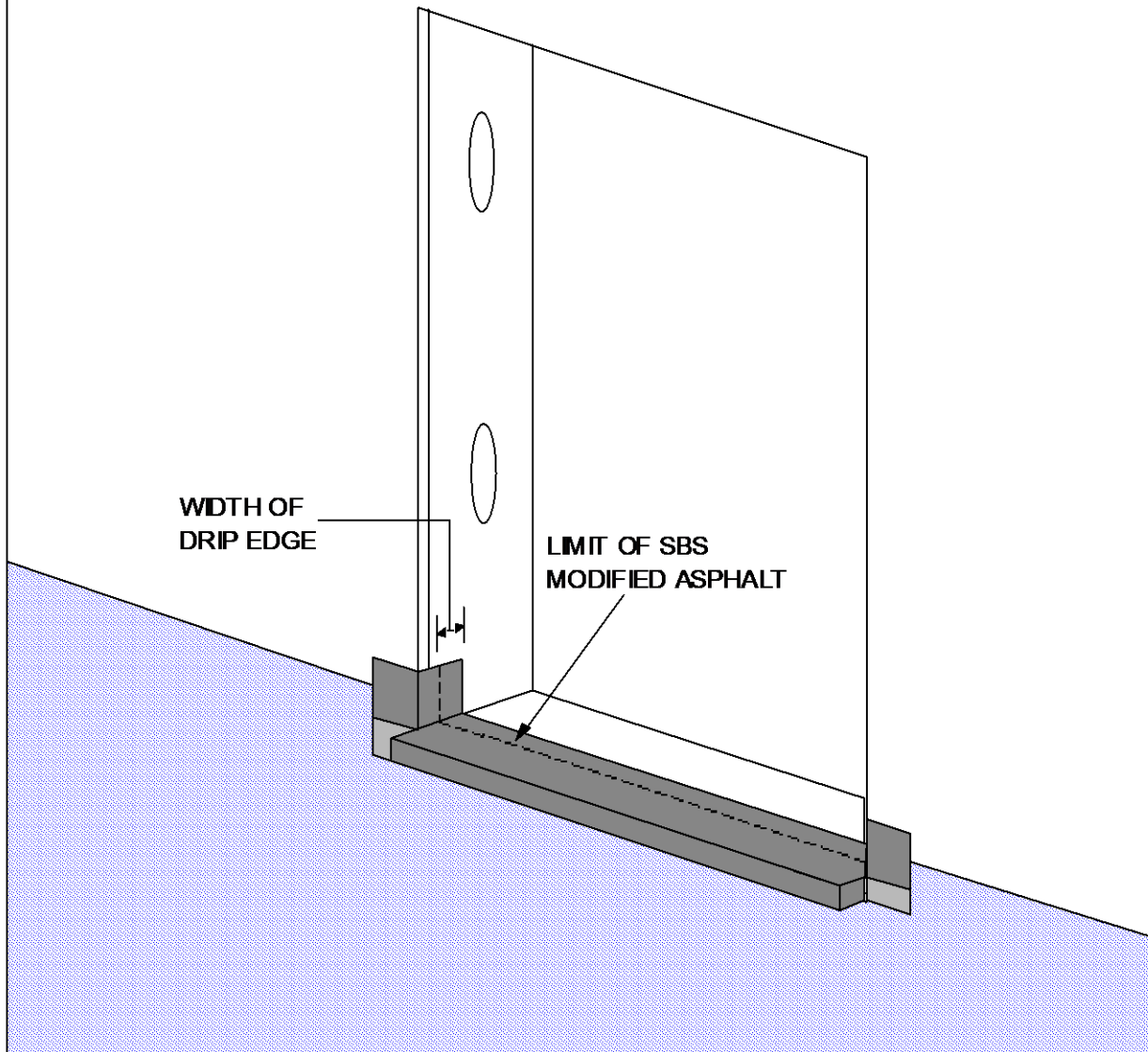
294 PLEASANT ST. SUITE 203A, STOUGHTON, MA 02072

(781) 344-9794 FAX (781) 344-9823

www.exo-tec.biz

WINDOW FLASHING SYSTEM INSTALLATION: STEP 2

3.) **INSTALL HYLOAD S/A FLASHING WITH DRIP EDGE AT THE WINDOW SILL WITH THE INNER EDGE OF THE DRIP EDGE AT THE APPROXIMATE LOCATION OF THE BACK EDGE OF THE WINDOW.**

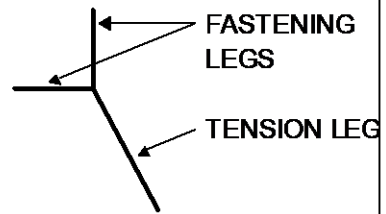


EXO-TEC MANUFACTURING, INC.
294 PLEASANT ST. SUITE 203A, STOUGHTON, MA 02072

(781) 344-9794 FAX (781) 344-9823
www.exo-tec.biz

WINDOW FLASHING SYSTEM INSTALLATION: STEP 3

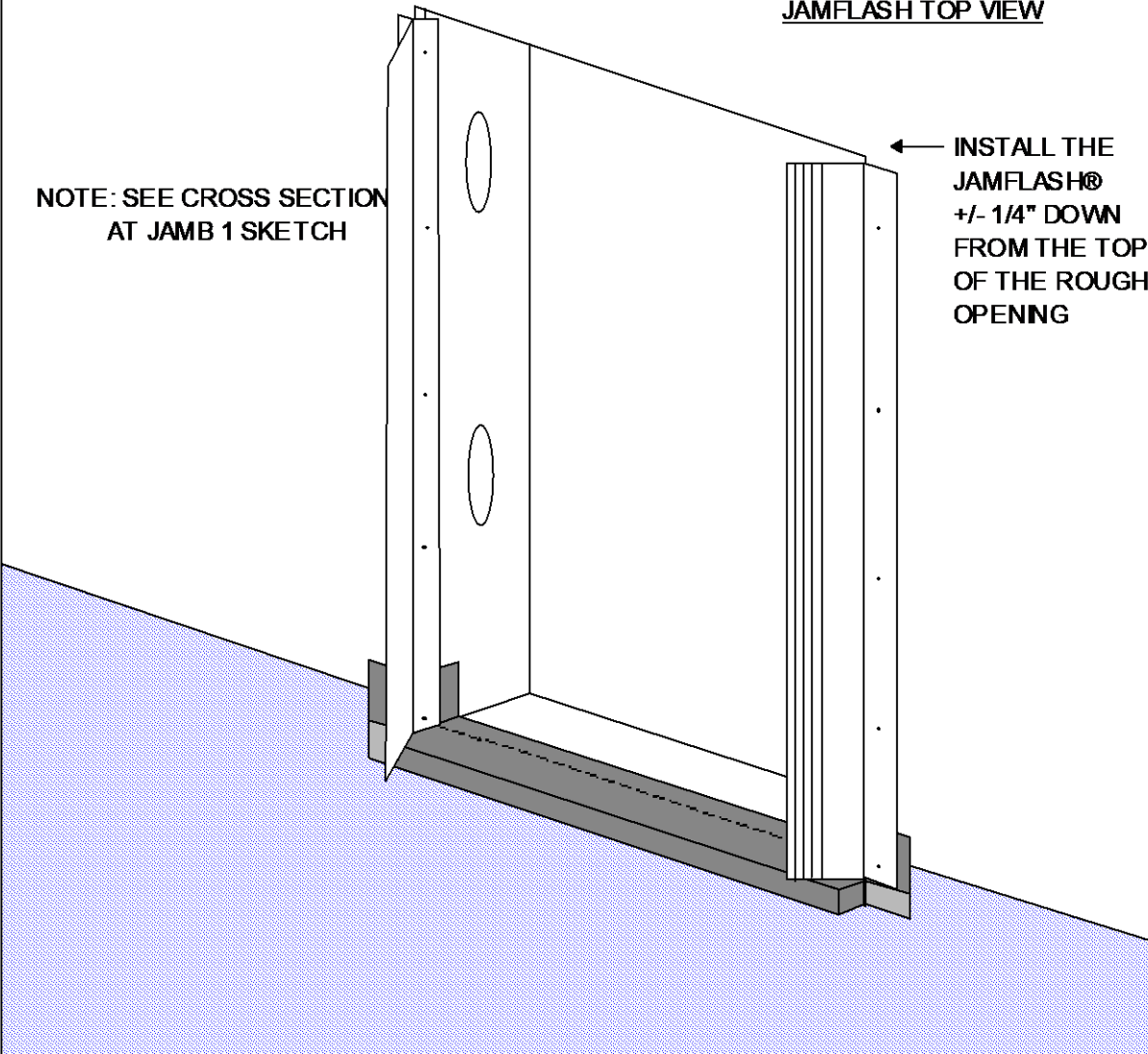
4.) **INSTALL JAMFLASH® BY SEATING IT TIGHTLY TO THE JAMB AND SHEATHING THEN FASTENING IT WITH CORROSION RESISTANT, PANCAKE HEAD, SELF-TAPPING SCREWS AT 12" O.C. ON BOTH FASTENING LEGS**



JAMFLASH TOP VIEW

NOTE: SEE CROSS SECTION AT JAMB 1 SKETCH

INSTALL THE JAMFLASH® +/- 1/4" DOWN FROM THE TOP OF THE ROUGH OPENING



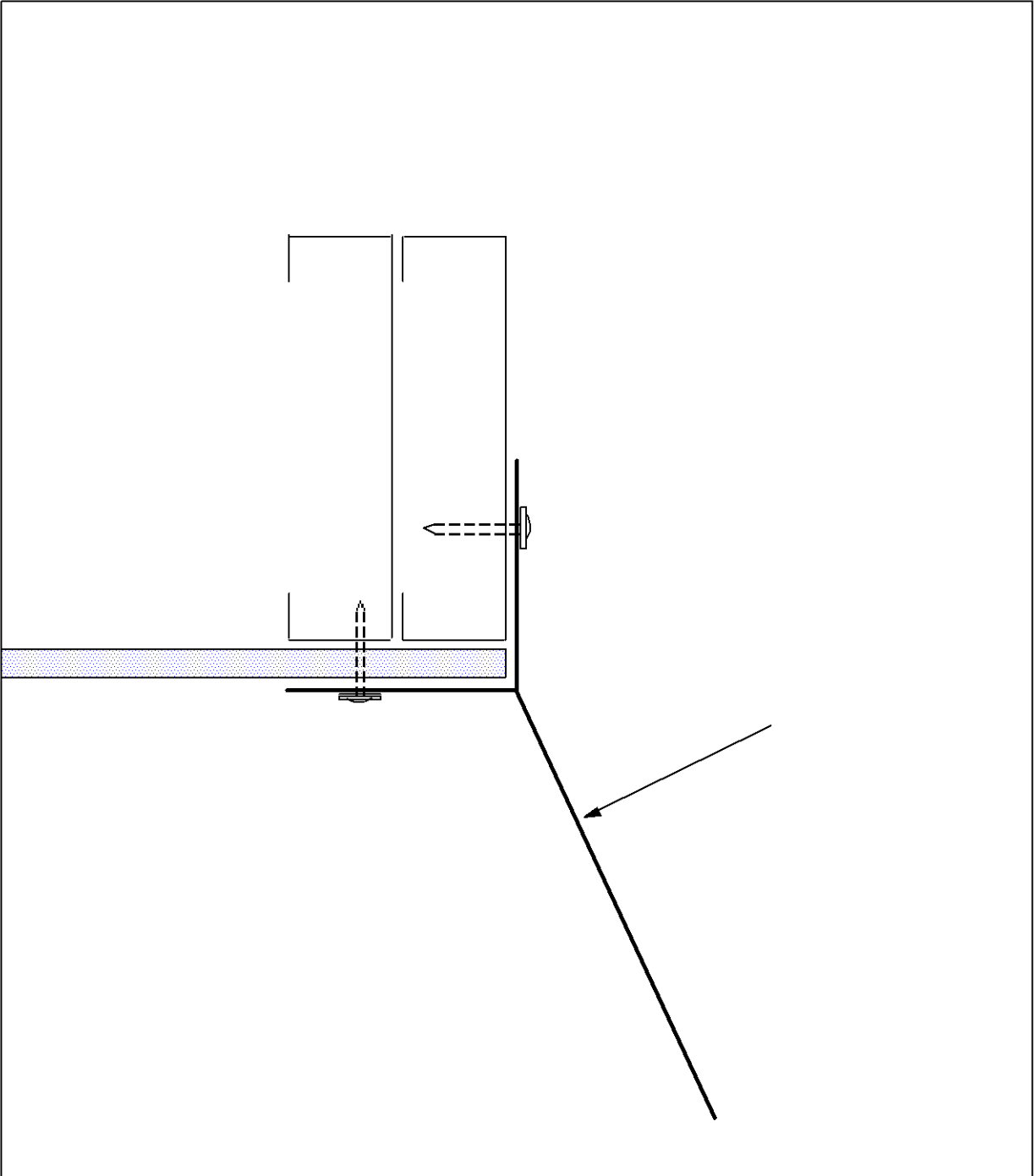
EXO-TECD MANUFACTURING, INC.

294 PLEASANT ST. SUITE 203A, STOUGHTON, MA 02072

(781) 344-9794 FAX (781) 344-9823

www.exo-tec.biz

WINDOW FLASHING SYSTEM INSTALLATION: STEP 4



EXO-TEC MANUFACTURING, INC.

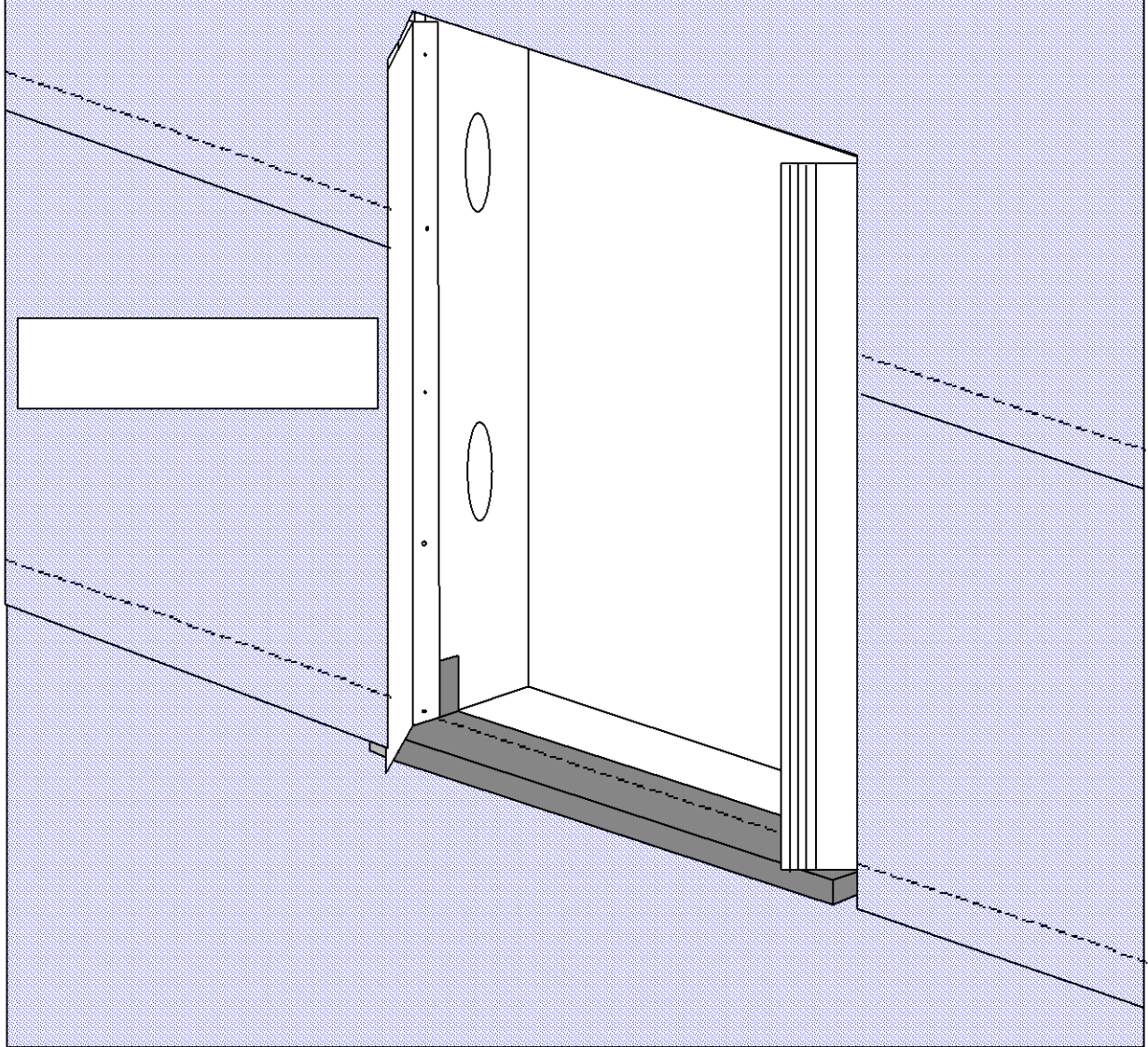
294 PLEASANT ST. SUITE 203A, STOUGHTON, MA 02072

(781) 344-9794 FAX (781) 344-9823

www.exo-tec.biz

WINDOW FLASHING SYSTEM INSTALLATION: SECTION AT JAMB 1

5.) INSTALL THE WATER, AIR OR AIR / VAPOR BARRIER UP AND OVER THE WINDOW. LAP OVER THE CAVITY FACE FASTENING LEG OF THE JAMFLASH.



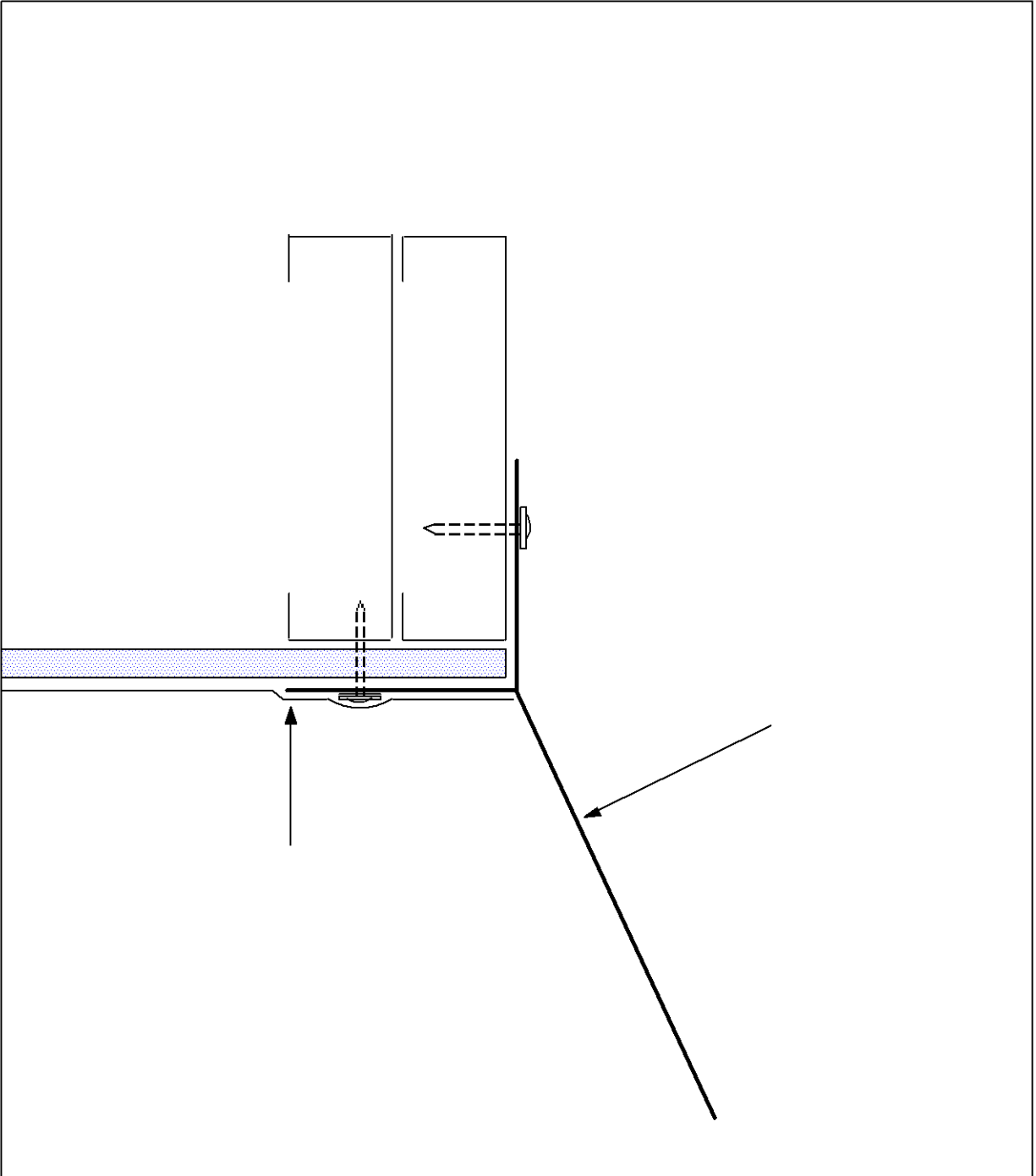
EXO-TEC MANUFACTURING, INC.

294 PLEASANT ST. SUITE 203A, STOUGHTON, MA 02072

(781) 344-9794 FAX (781) 344-9823

www.exo-tec.biz

WINDOW FLASHING SYSTEM INSTALLATION: STEP 5



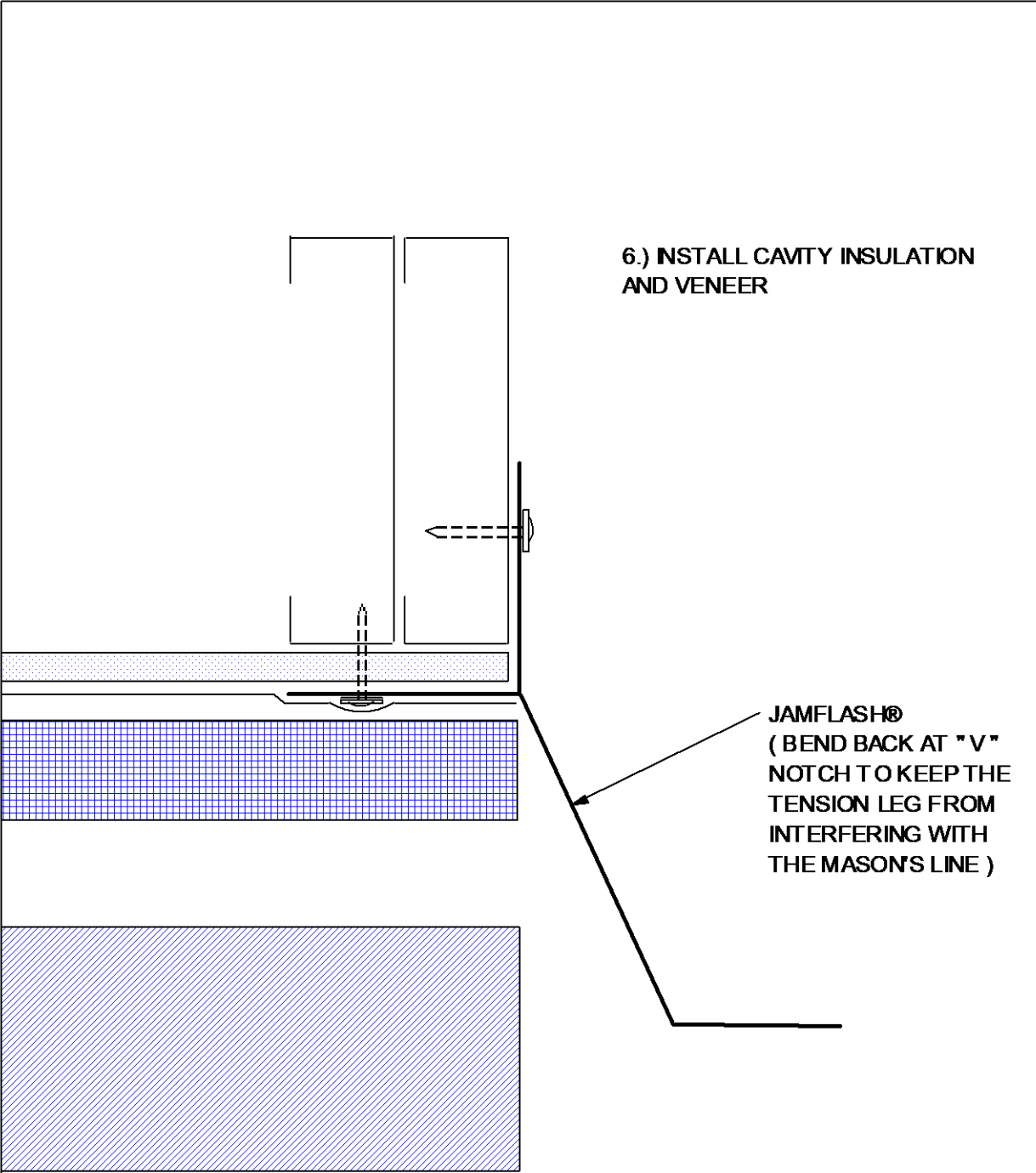
EXO-TEC MANUFACTURING, INC.

294 PLEASANT ST. SUITE 203A, STOUGHTON, MA 02072

(781) 344-9794 FAX (781) 344-9823

www.exo-tec.biz

WINDOW FLASHING SYSTEM INSTALLATION: SECTION AT JAMB 2



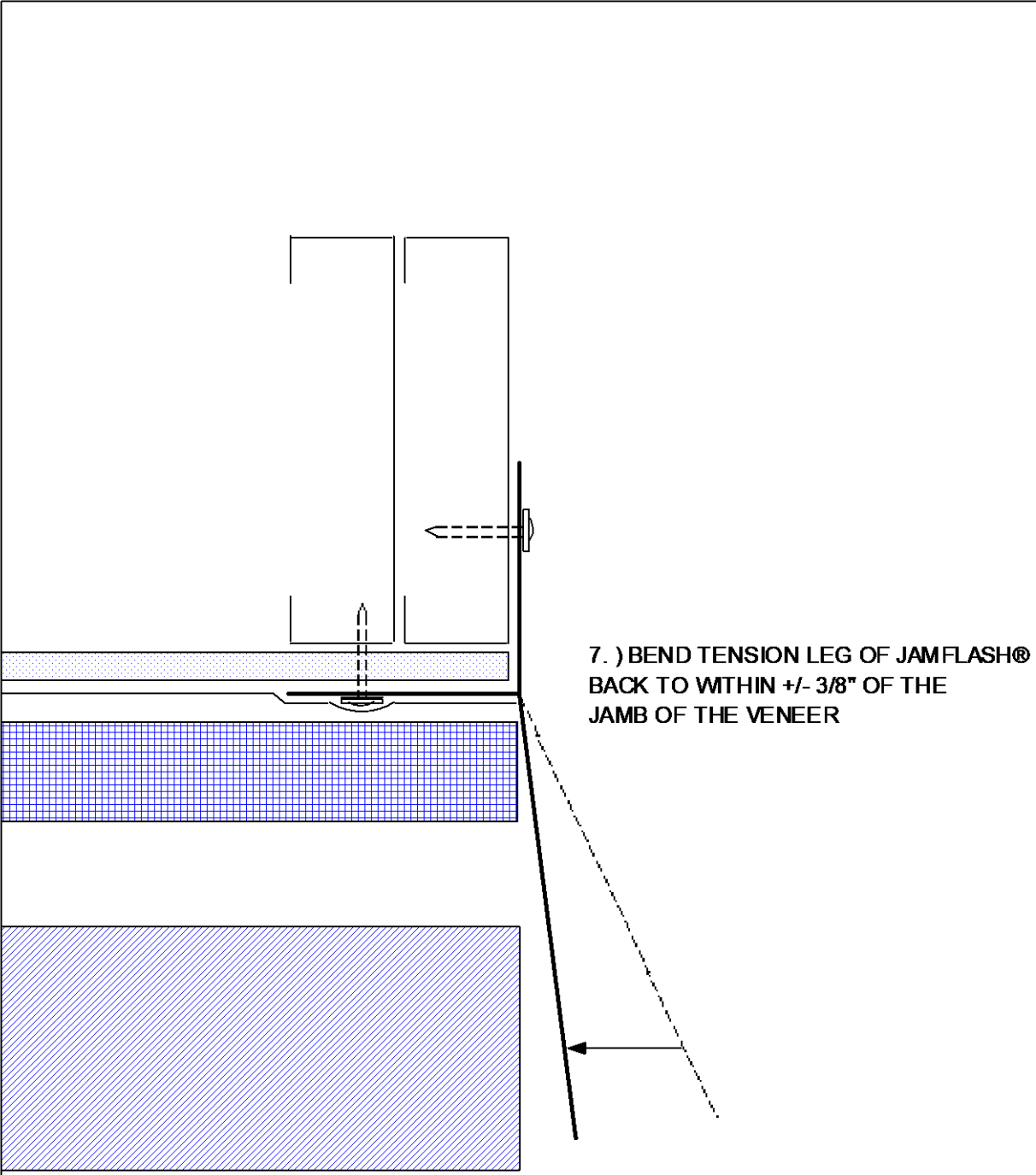
6.) INSTALL CAVITY INSULATION AND VENEER

JAMFLASH®
(BEND BACK AT "V"
NOTCH TO KEEP THE
TENSION LEG FROM
INTERFERING WITH
THE MASON'S LINE)

EXO-TEC MANUFACTURING, INC.
294 PLEASANT ST. SUITE 203A, STOUGHTON, MA 02072

(781) 344-9794 FAX (781) 344-9823
www.exo-tec.biz

WINDOW FLASHING SYSTEM INSTALLATION: STEP 6



7.) BEND TENSION LEG OF JAMFLASH®
BACK TO WITHIN +/- 3/8" OF THE
JAMB OF THE VENEER

EXO-TEC MANUFACTURING, INC.

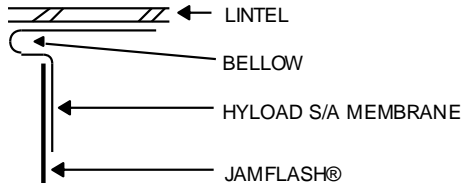
(781) 344-9794 FAX (781) 344-9823

294 PLEASANT ST. SUITE 203A, STOUGHTON, MA 02072

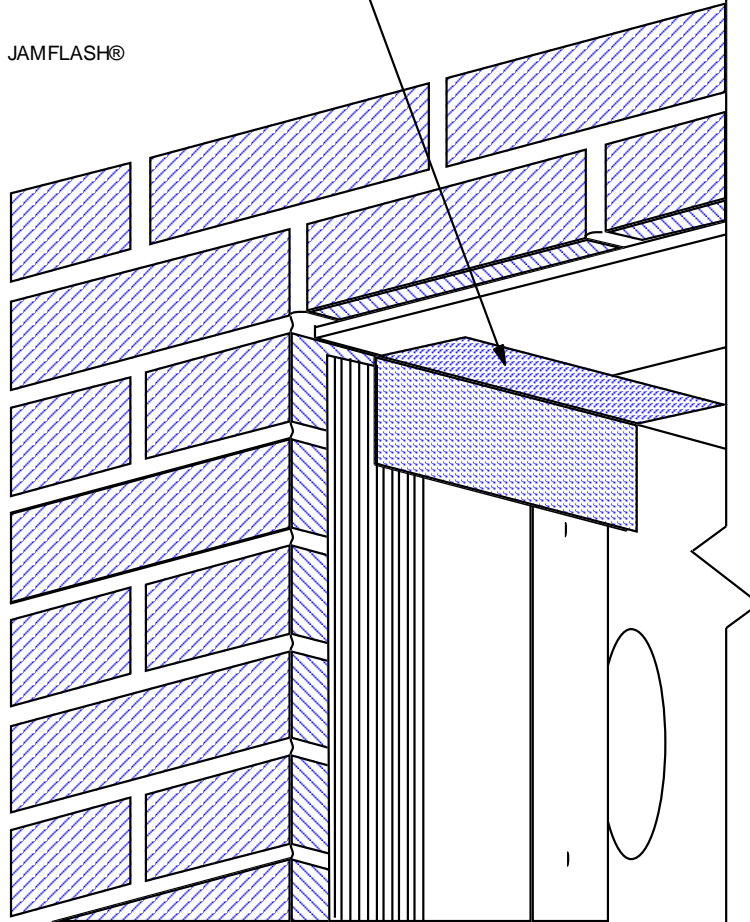
www.exo-tec.biz

WINDOW FLASHING SYSTEM INSTALLATION: STEP 7

8.) APPLY A 6" WIDE STRIP OF HYLOAD SELF ADHERING MEMBRANE FLASHING TO THE JUNCTION OF THE JAMFLASH® AND THE LOOSE LINTEL AT THE HEAD OF THE OPENING. RELEASE THE PRESSURE ON THE JAMFLASH® TO ALLOW IT TO SPRING BACK TO ITS NATURAL SHAPE. A "BELLOW" WILL OCCUR IN THE HYLOAD FLASHING MEMBRANE AT THE 1/4" GAP BETWEEN THE TOP OF THE FLASHING AND BOTTOM OF THE LINTEL.

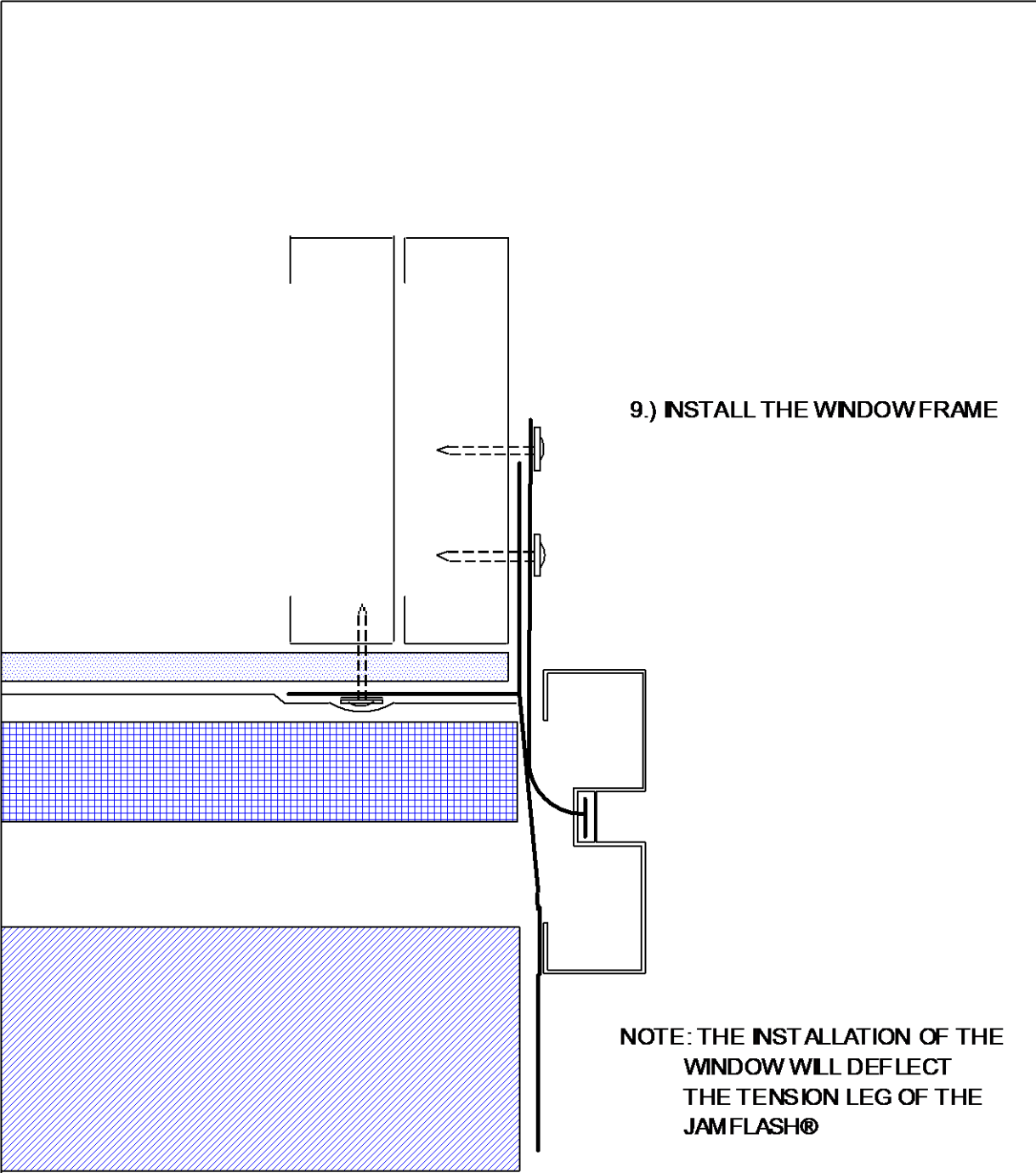


BELLOW DETAIL



EXO-TEC MANUFACTURING, INC. (781) 344-9794 FAX (718) 344-9823
294 PLEASANT ST. SUITE 203A STOUGHTON, MA 02072 www.exo-tec.biz

WINDOW FLASHING INSTALLATION: STEP 8



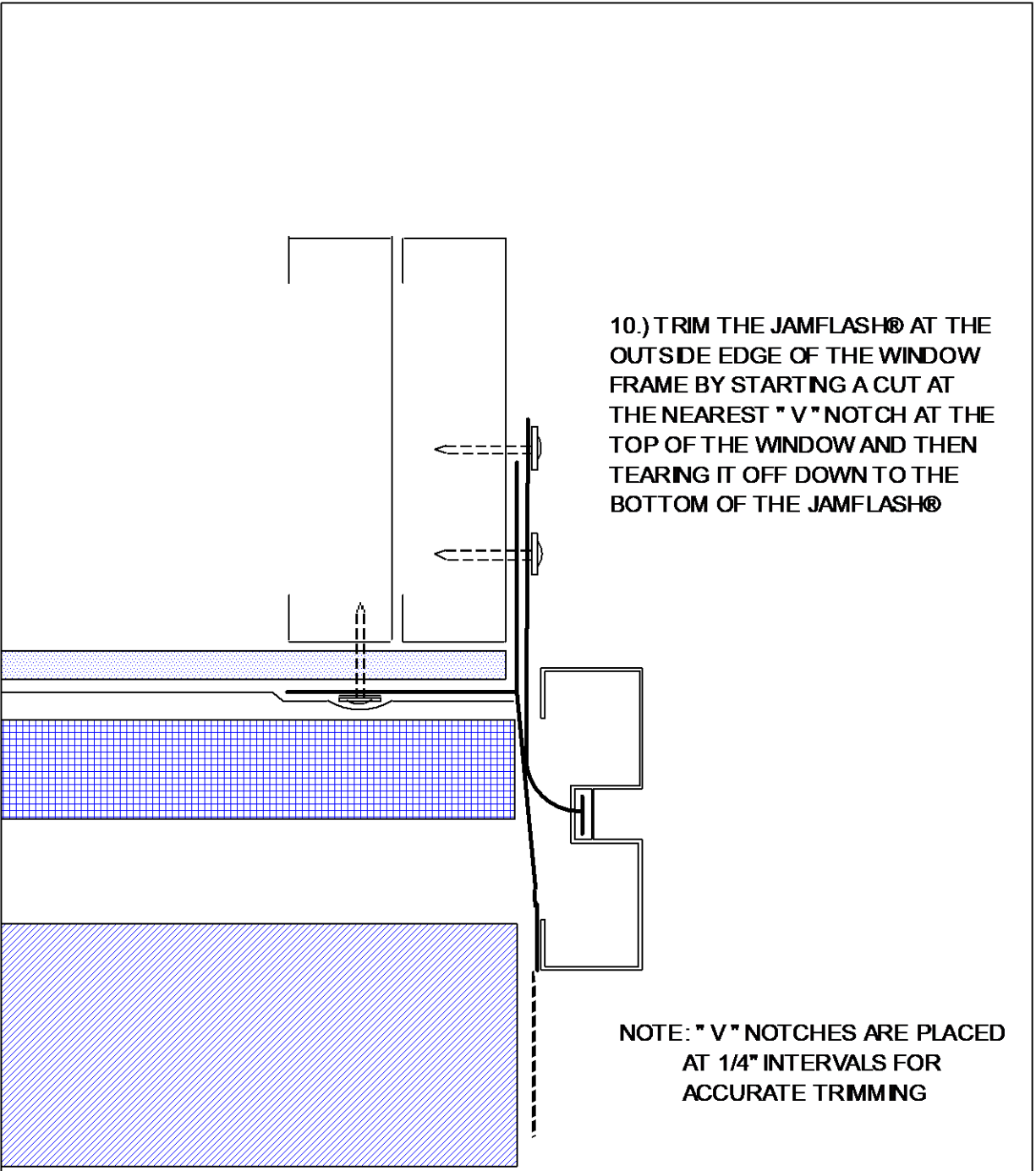
9.) INSTALL THE WINDOW FRAME

NOTE: THE INSTALLATION OF THE WINDOW WILL DEFLECT THE TENSION LEG OF THE JAMFLASH®

EXO-TEC MANUFACTURING, INC.
294 PLEASANT ST. SUITE 203A, STOUGHTON, MA 02072

(781) 344-9794 FAX (781) 344-9823
www.exo-tec.biz

WINDOW FLASHING SYSTEM INSTALLATION: STEP 9



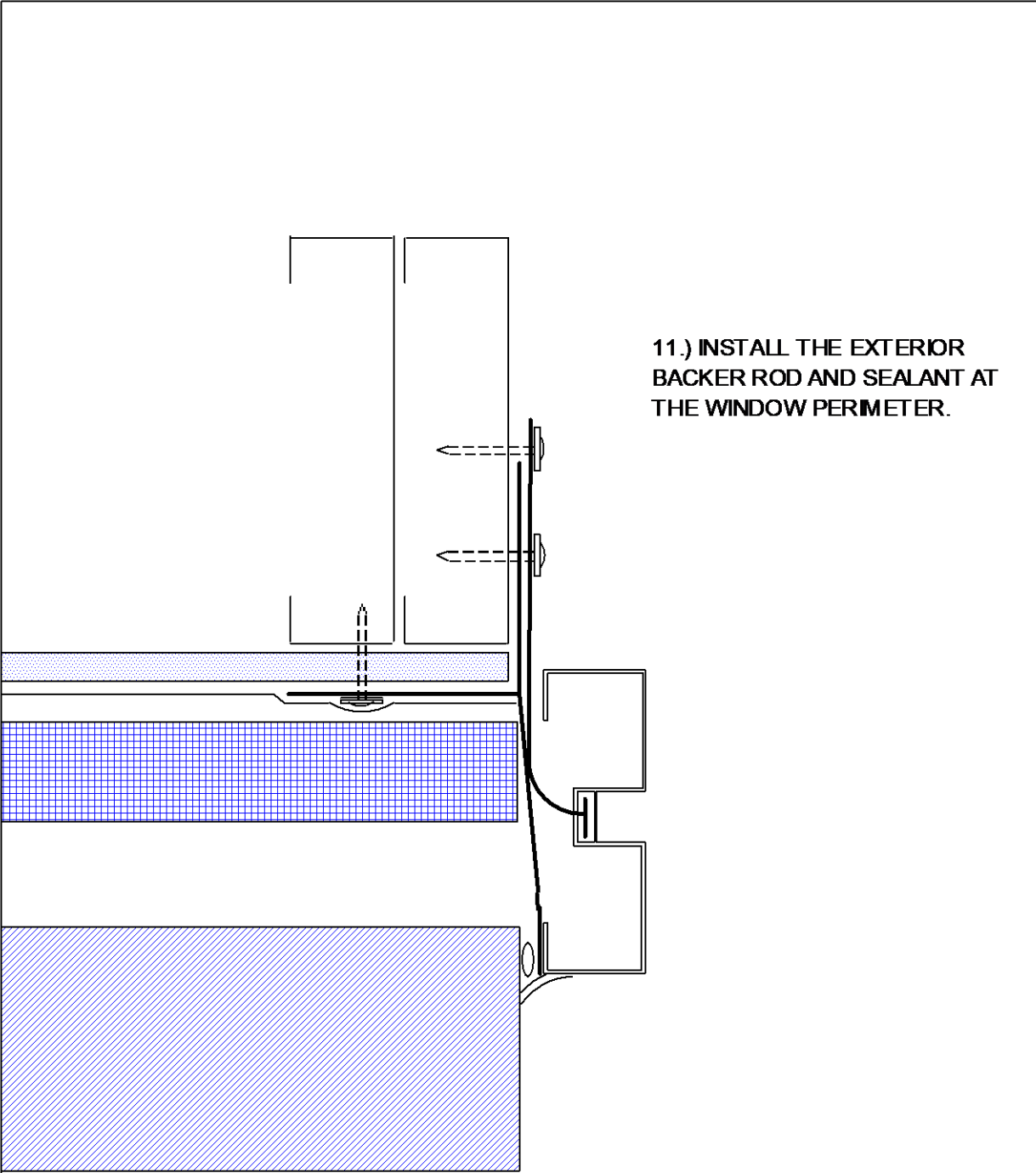
10.) TRIM THE JAMFLASH® AT THE OUTSIDE EDGE OF THE WINDOW FRAME BY STARTING A CUT AT THE NEAREST " V " NOTCH AT THE TOP OF THE WINDOW AND THEN TEARING IT OFF DOWN TO THE BOTTOM OF THE JAMFLASH®

NOTE: " V " NOTCHES ARE PLACED AT 1/4" INTERVALS FOR ACCURATE TRIMMING

EXO-TEC MANUFACTURING, INC.
 294 PLEASANT ST. SUITE 203A, STOUGHTON, MA 02072

(781) 344-9794 FAX (781) 344-9823
 www.exo-tec.biz

WINDOW FLASHING SYSTEM INSTALLATION: STEP 10

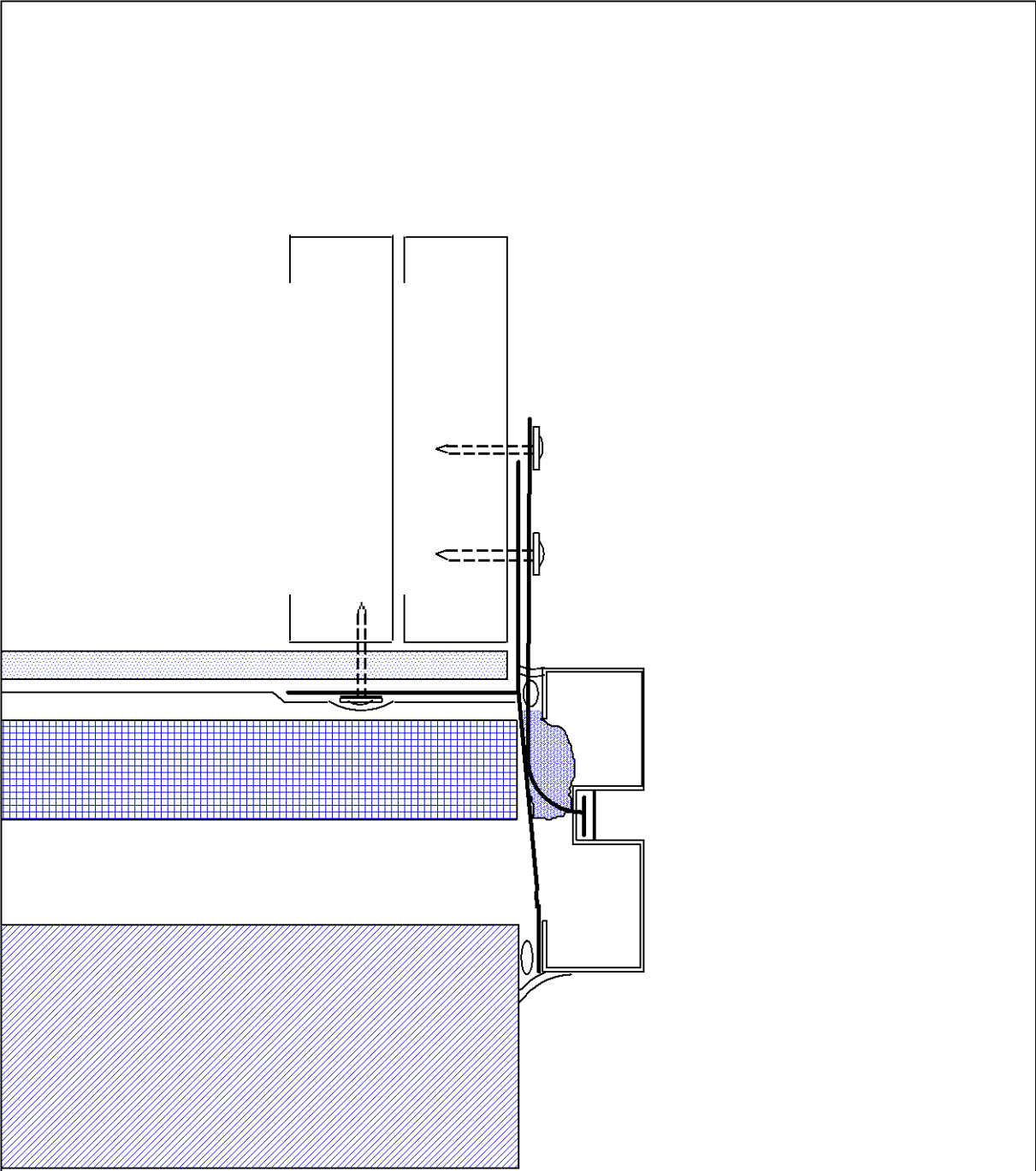


11.) INSTALL THE EXTERIOR
BACKER ROD AND SEALANT AT
THE WINDOW PERIMETER.

EXO-TEC MANUFACTURING, INC.
294 PLEASANT ST. SUITE 203A, STOUGHTON, MA 02072

(781) 344-9794 FAX (781) 344-9823
www.exo-tec.biz

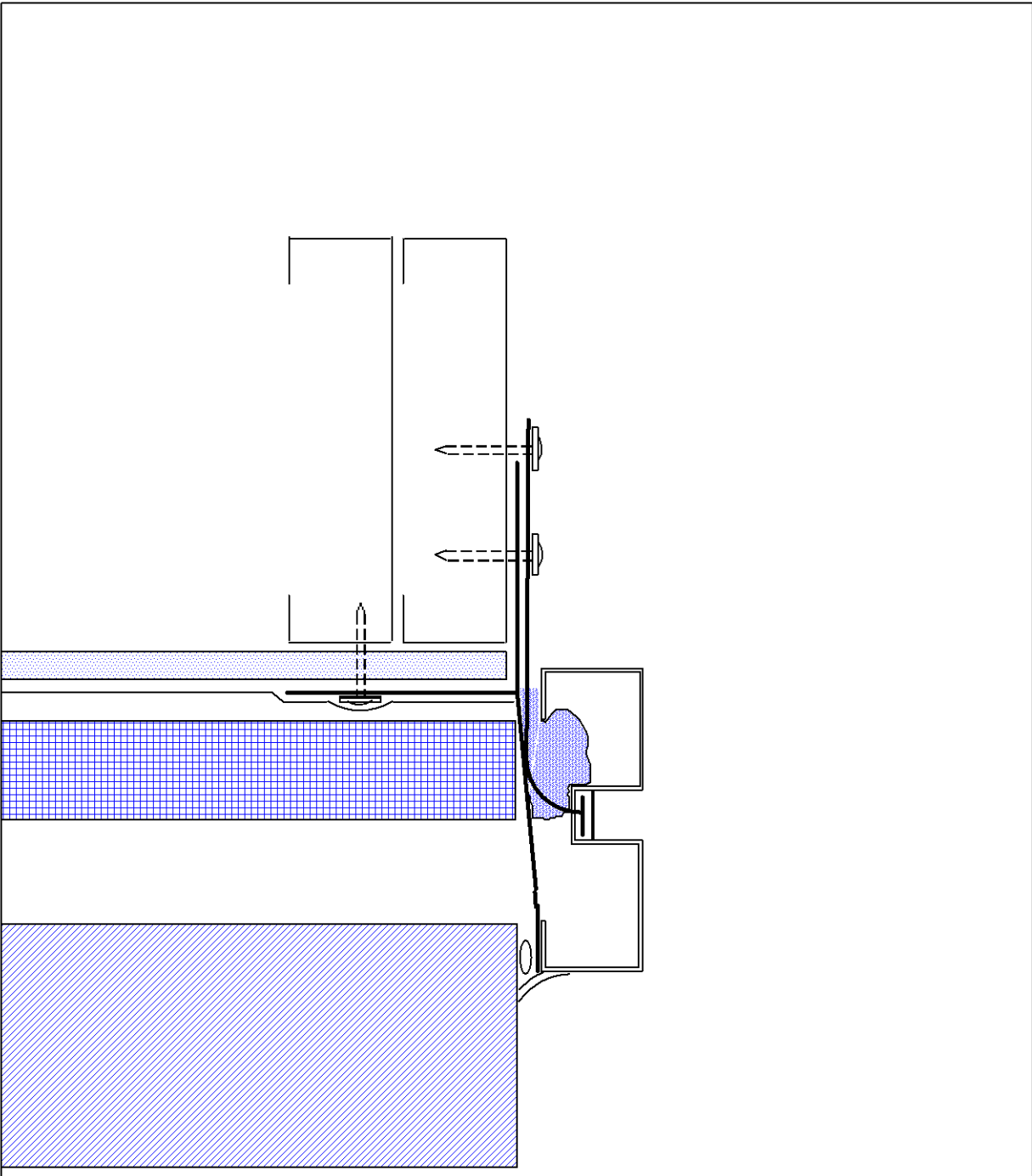
WINDOW FLASHING SYSTEM INSTALLATION: STEP 11



EXO-TEC MANUFACTURING, INC.
294 PLEASANT ST. SUITE 203A, STOUGHTON, MA 02072

(781) 344-9794 FAX (781) 344-9823
www.exo-tec.biz

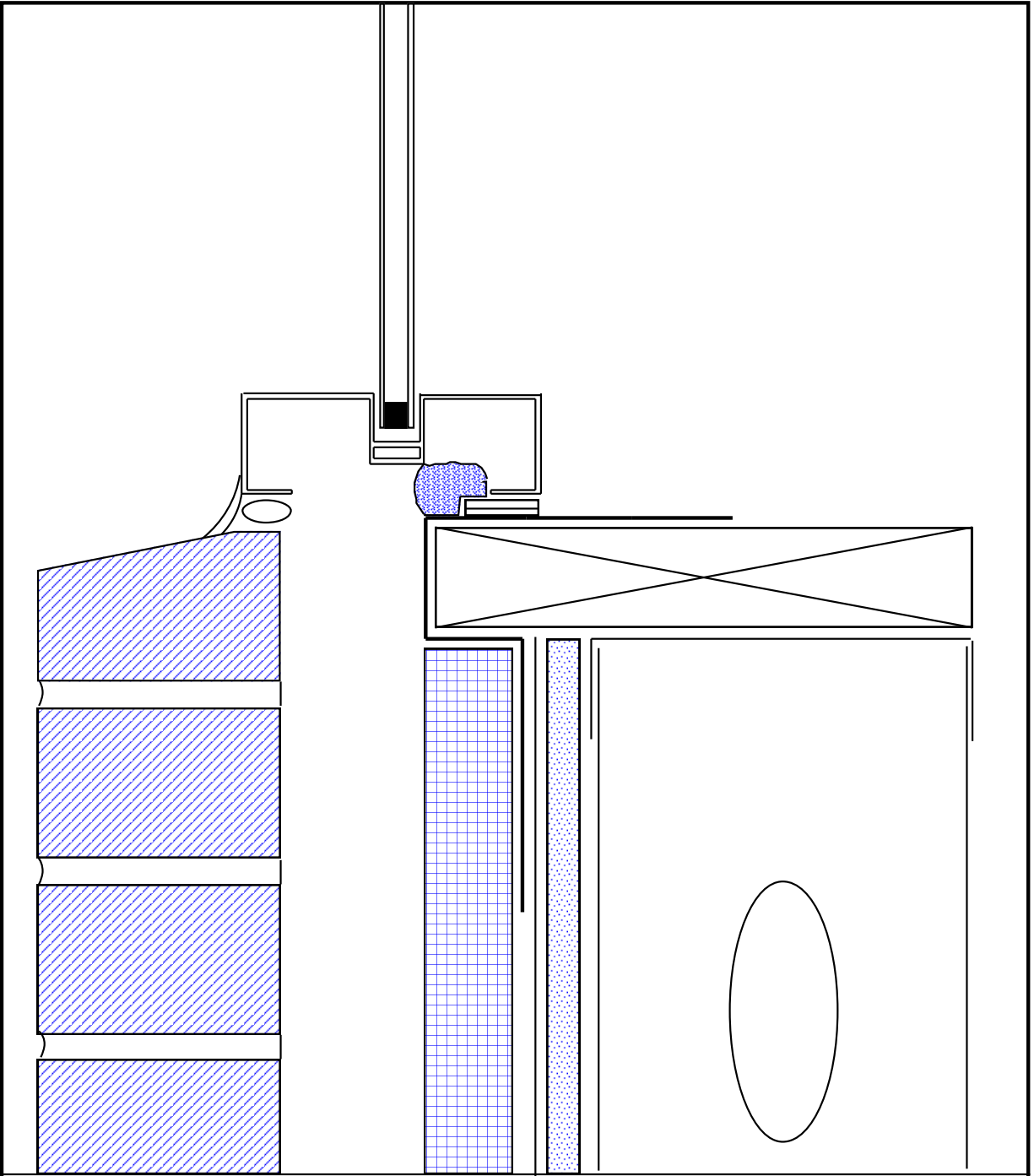
WINDOW FLASHING SYSTEM INSTALLATION: STEP 12 (OPTION 1)



EXO-TEC MANUFACTURING, INC.
294 PLEASANT ST. SUITE 203A, STOUGHTON, MA 02072

(781) 344-9794 FAX (781) 344-9823
www.exotec.biz

WINDOW FLASHING SYSTEM INSTALLATION: STEP 12 (OPTION 2)



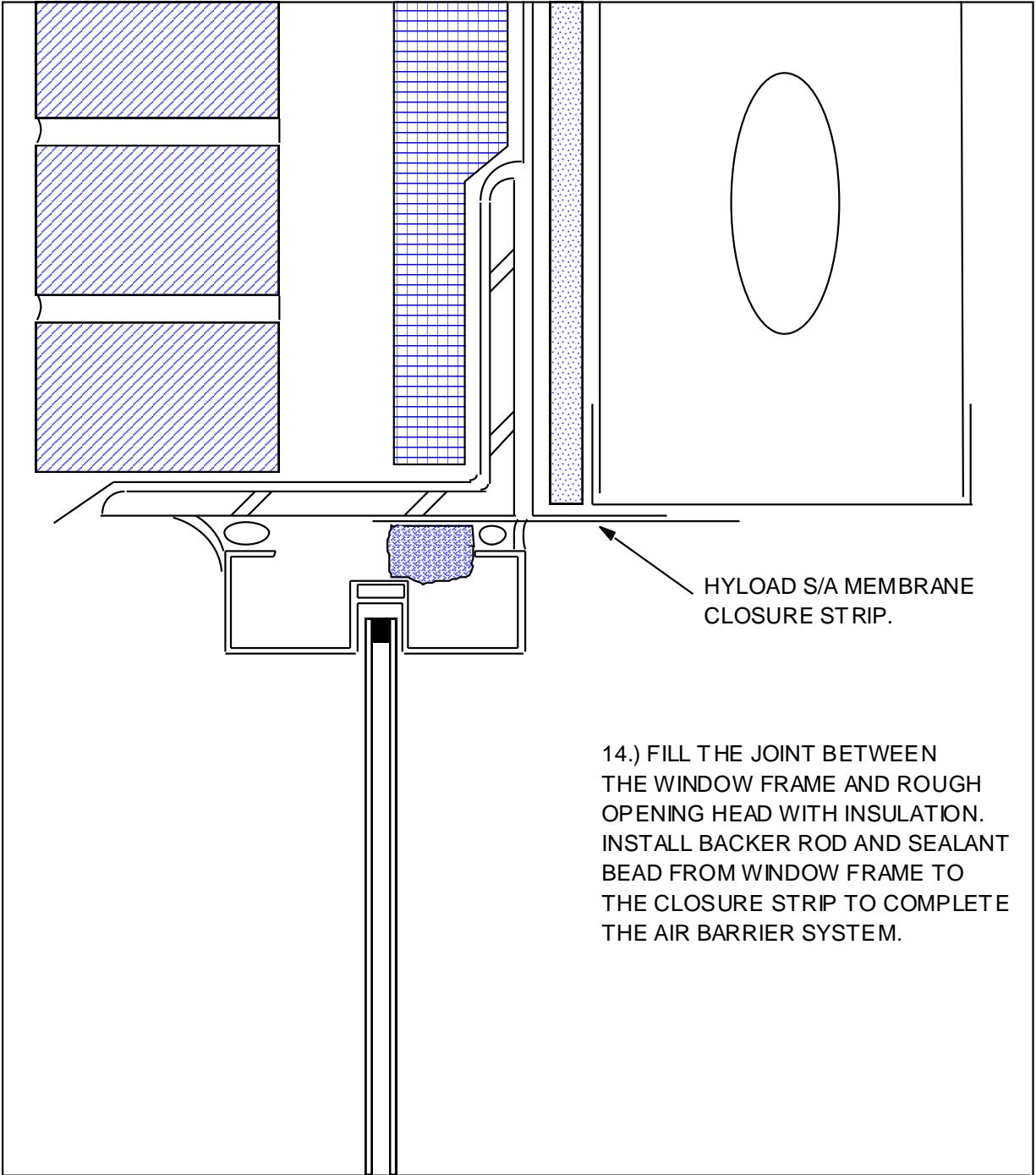
EXO-TEC MANUFACTURING, INC.

294 PLEASANT ST. SUITE 203A, STOUGHTON, MA 02072

(781) 344-9794 FAX (781) 344-9823

www.exo-tec.biz

WINDOW FLASHING SYSTEM INSTALLATION: STEP 13



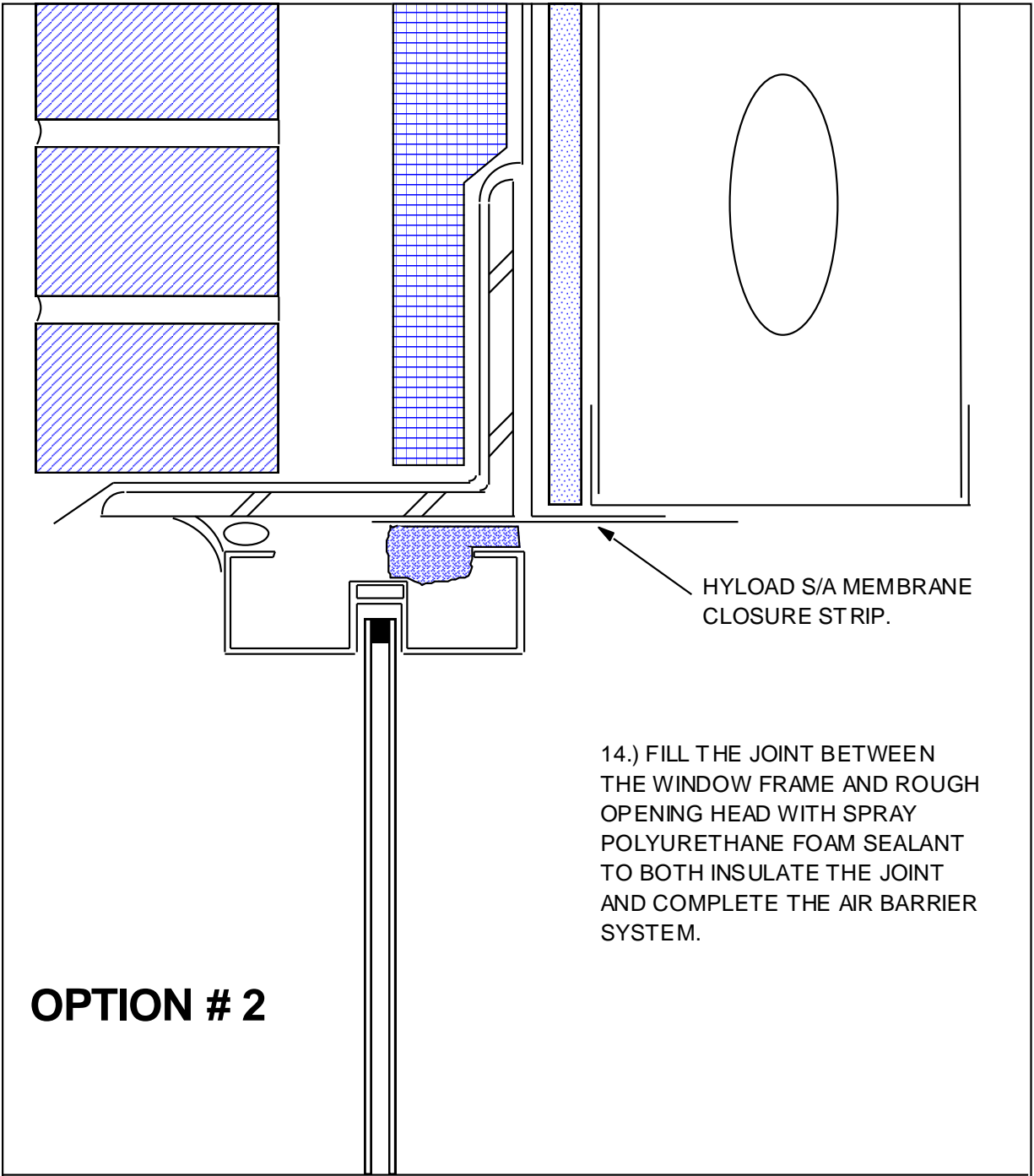
EXO-TEC MANUFACTURING, INC.

294 PLEASANT ST. SUITE 203A, STOUGHTON, MA 02072

(781) 344-9794 FAX (781) 344-9823

www.exo-tec.biz

WINDOW FLASHING SYSTEM INSTALLATION: STEP 14 (OPTION 1)



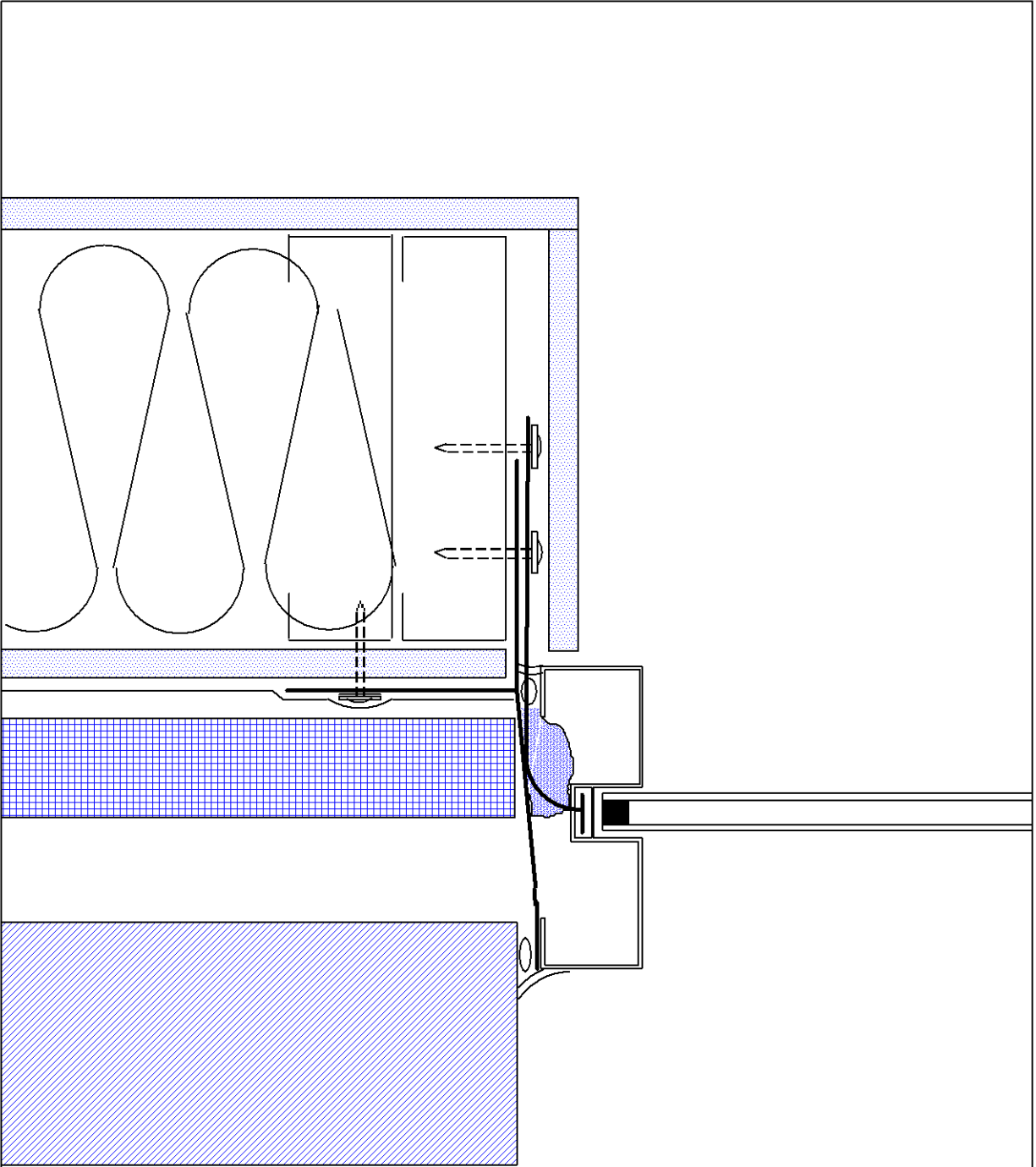
OPTION # 2

14.) FILL THE JOINT BETWEEN THE WINDOW FRAME AND ROUGH OPENING HEAD WITH SPRAY POLYURETHANE FOAM SEALANT TO BOTH INSULATE THE JOINT AND COMPLETE THE AIR BARRIER SYSTEM.

EXO-TEC MANUFACTURING, INC.
 294 PLEASANT ST. SUITE 203A, STOUGHTON, MA 02072

(781) 344-9794 FAX (781) 344-9823
 www.exo-tec.biz

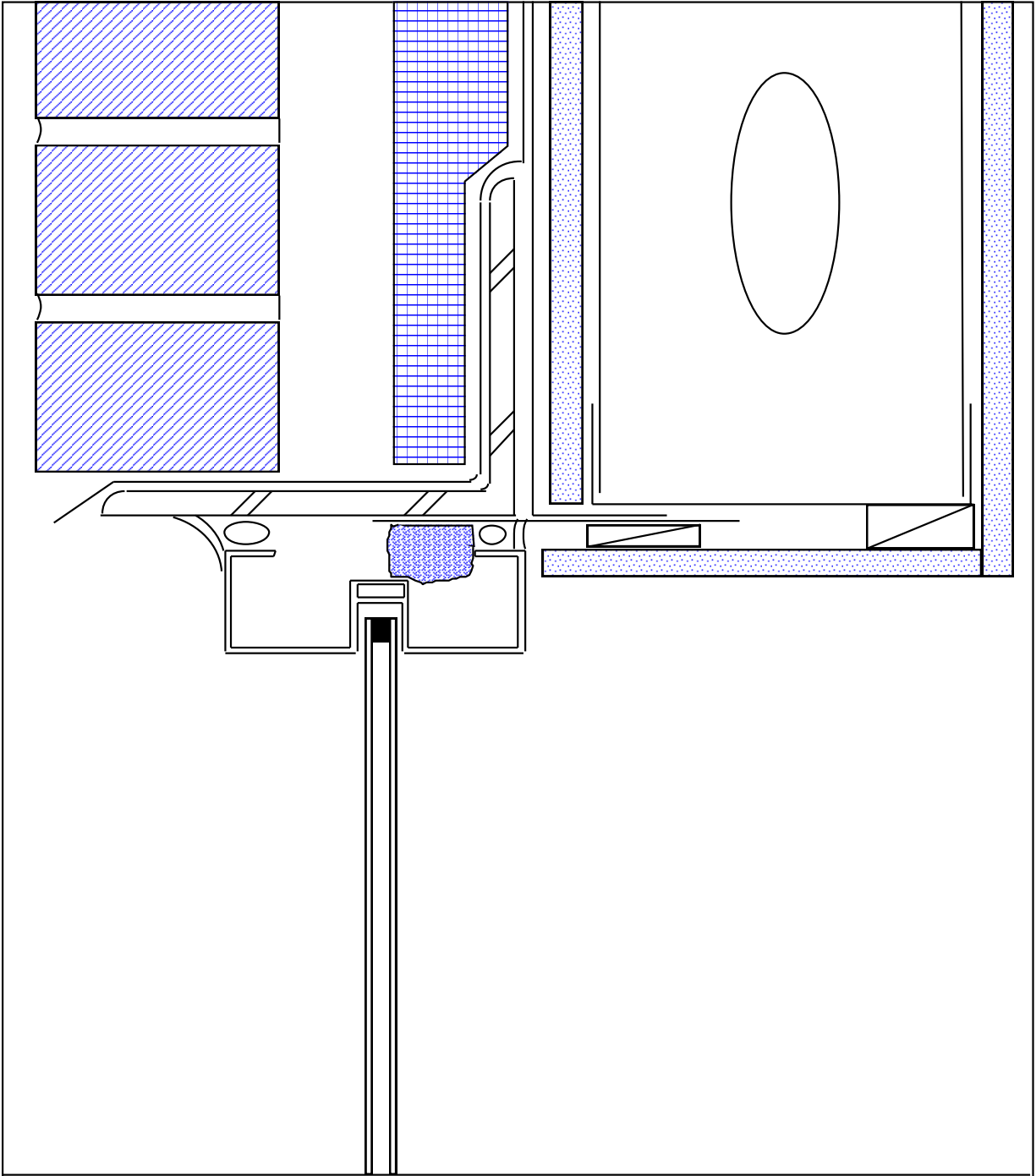
WINDOW FLASHING SYSTEM INSTALLATION: STEP 14 (OPTION 2)



EXO-TEC MANUFACTURING, INC.
294 PLEASANT ST. SUITE 203A, STOUGHTON, MA 02072

(781) 344-9794 FAX (781) 344-9823
www.exo-tec.biz

WINDOW FLASHING SYSTEM INSTALLATION: STEP 15



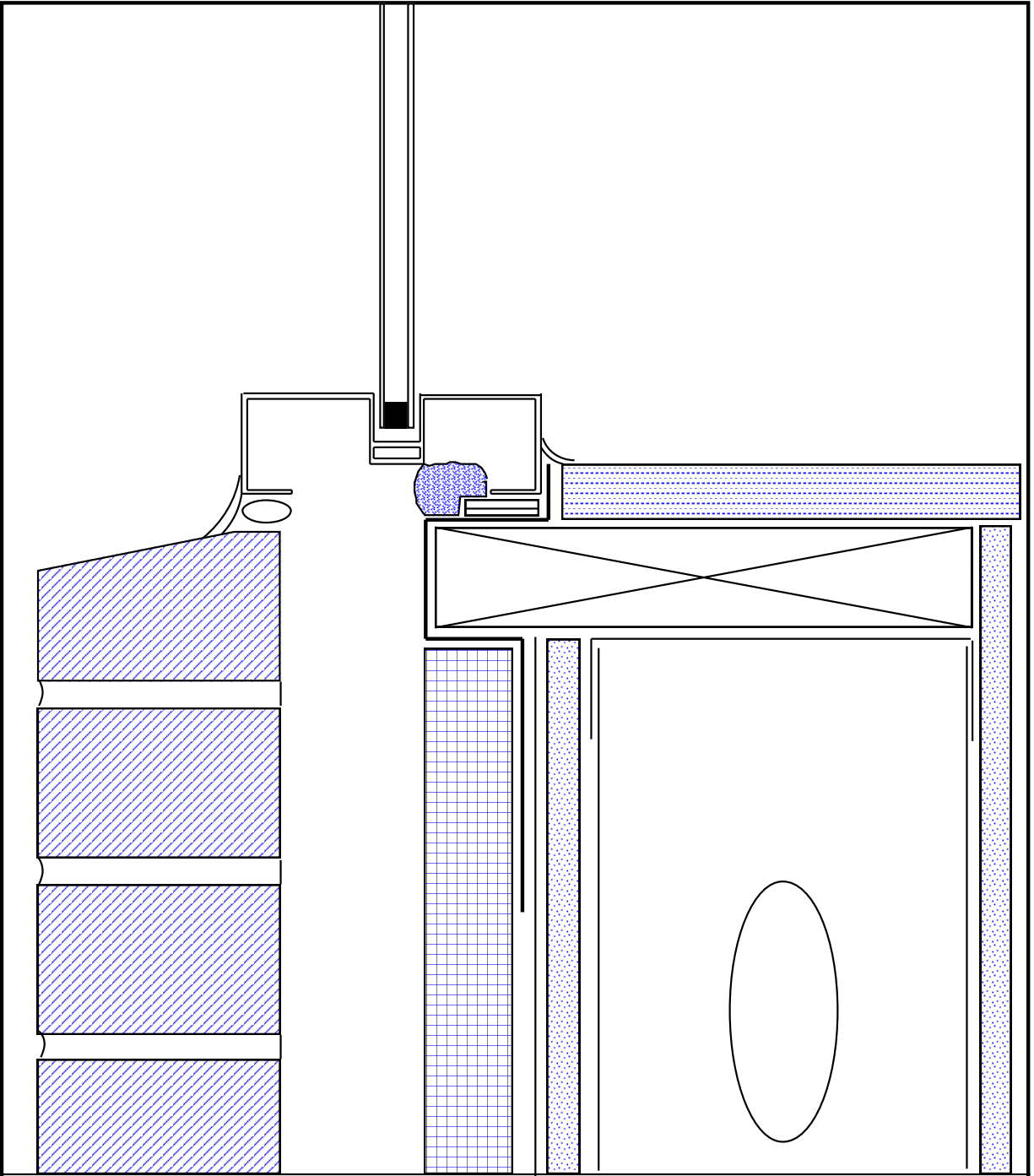
EXO-TEC MANUFACTURING, INC.

294 PLEASANT ST. SUITE 203A, STOUGHTON, MA 02072

(781) 344-9794 FAX (781) 344-9823

www.exo-tec.biz

WINDOW FLASHING SYSTEM INSTALLATION: STEP 16



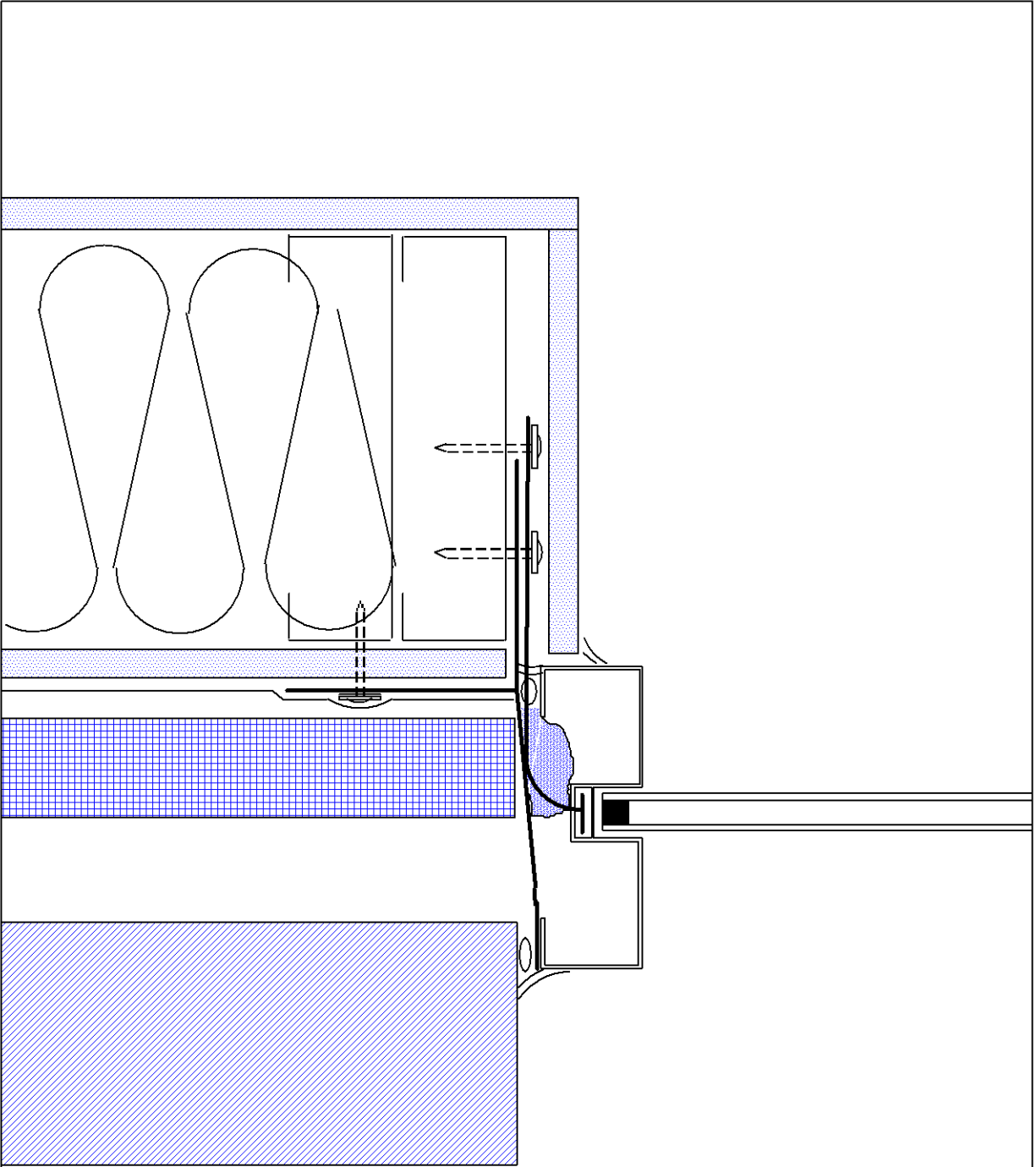
EXO-TEC MANUFACTURING, INC.

294 PLEASANT ST. SUITE 203A, STOUGHTON, MA 02072

(781) 344-9794 FAX (781) 344-9823

www.exo-tec.biz

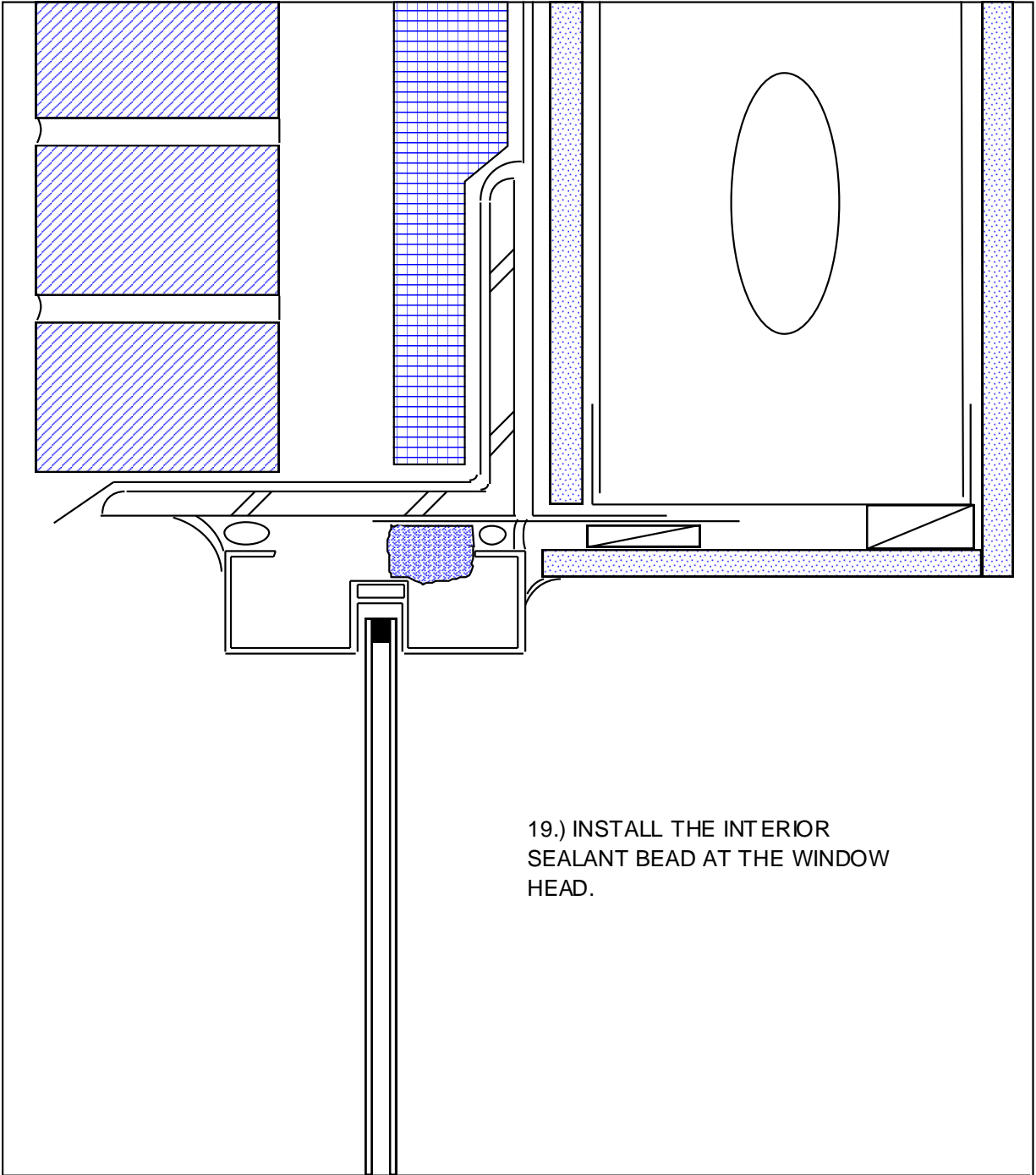
WINDOW FLASHING SYSTEM INSTALLATION: STEP 17



LENNEL SPECIALTIES CORPORATION
294 PLEASANT ST. SUITE 101, STOUGHTON, MA 02072

(781) 344-9794 FAX (781) 344-9823
www.lennelspec.co.com

WINDOW FLASHING SYSTEM INSTALLATION: STEP 18



19.) INSTALL THE INTERIOR
SEALANT BEAD AT THE WINDOW
HEAD.

EXO-TEC MANUFACTURING, INC.

294 PLEASANT ST. SUITE 203A, STOUGHTON, MA 02072

(781) 344-9794 FAX (781) 344-9823

www.exo-tec.biz

WINDOW FLASHING SYSTEM INSTALLATION: STEP 19