

JAMFLASH®

U. s. Patent # 6244001

EXO-TEC Manufacturing, Inc.

1 Kiddie Drive, Suite 215
Avon, MA 02322

P (508) 580-0901 F (508) 580-0906
www.exo-tec.biz

DESCRIPTION

JAMFLASH® is a semi-rigid, 40 mil thick, extruded flashing product which provides a primary waterproofing barrier at the jambs of windows, storefronts, curtainwalls and doors installed in exterior walls of buildings.

Fabricated from a custom blend of resin modified UV resistant thermoplastic, Jamflash® will withstand exposure to jobsite conditions, chemicals and abuse. This formulation will last the life of the building.

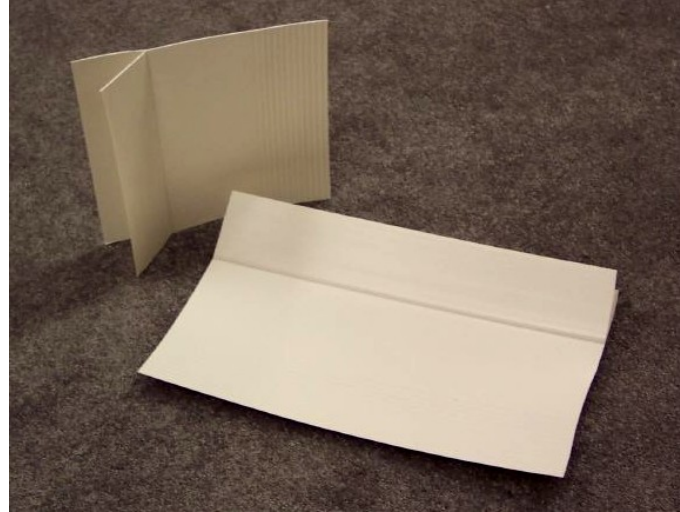
FEATURES & BENEFITS

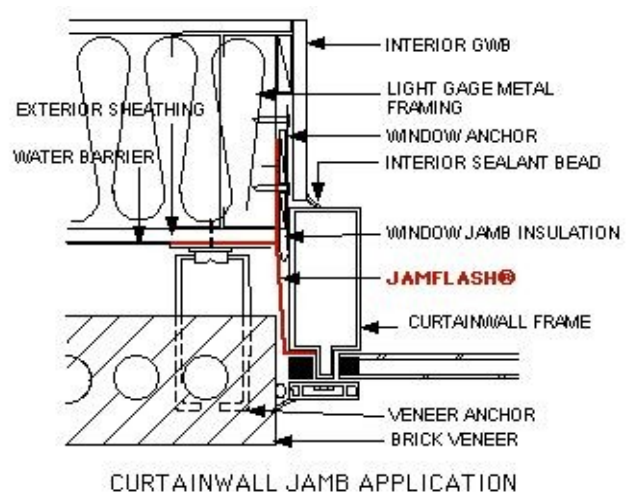
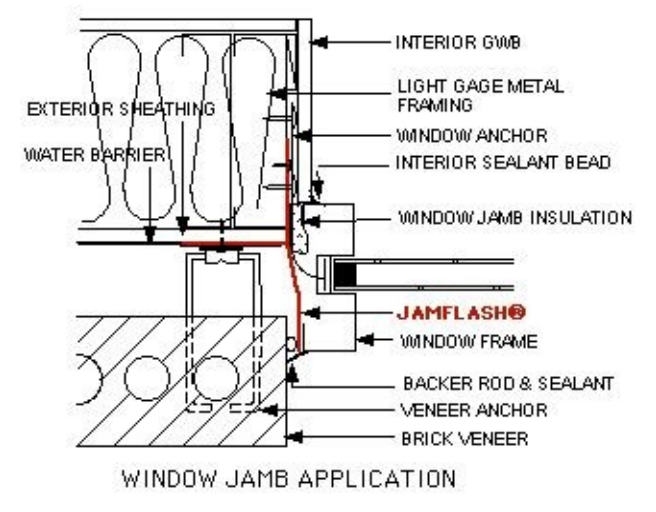
- Compatible with sealant materials
- Compatible with self adhering flashings and their accessory materials
- Easily cut to required lengths
- Easily trimmed to desired outer edge dimension due to the “vee” notches formed in the 7” long leg
- Greater longevity than sealant materials
- Less costly than a secondary sealant joint
- Less problematic and easier to install than flexible membranes or sheet metal flashings
- Will not rip, tear or get lodged in the cavity during construction
- Prevents window jamb insulation from getting wet
- Can be re-used when the building’s windows are replaced

PACKAGING

Jamflash® is readily available in 8’, 10’ and 12’ lengths and is packaged 20 pcs per box.

Custom sizes and lengths can be provided with a 45 day lead time.

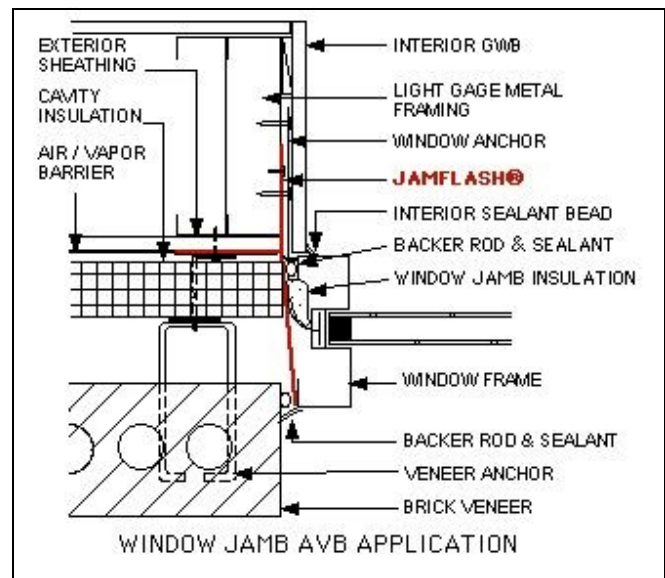




INSTALLATION

1. Install window sill flashing.
2. Seat Jamflash® tightly to both surfaces of the rough opening jamb.
3. Install fasteners that are appropriate for the substrate through both 3" legs of the Jamflash® and into the substrate at 12" O.C. vertically.
4. Install the water barrier onto the back-up wall and lap it over the 3" leg of the Jamflash® that is on the same plane of the water barrier and seal the terminations at the Jamflash® per the manufacturers recommendations.
5. Install the building veneer.
6. Install the window or door frame.
7. Trim the tension leg (7" long leg) of the Jamflash® flush with or just behind the front edge of the door or window frame by making a small cut at the appropriate " vee notch " and then pulling on the outer edge so as to peel the excess portion of the Jamflash® leg away.
8. Install the backer rod and sealant at the frame perimeter insuring that the sealant extends from the veneer to the frame. This would entail a fillet bead profile when the outer edge of the Jamflash® is trimmed flush with the frame or a standard bead profile when the Jamflash® is trimmed back from the outer edge of the frame.

At curtainwall jambs, bend the tension leg (7" long leg) into the glazing pocket at the closest " vee notch ", trim the Jamflash® at the inner edge of the glazing pocket. The seal is completed when the equalizer and pressure plate are installed.



AIR / VAPOR BARRIER (AVB) SYSTEMS

Jambs for exterior wall systems with air barriers must have a seal between the frame and the air barrier material. This can be accomplished by:

- 1.) Filling the joint between the frame and back-up wall with fibrous insulation and then installing a sealant joint between the interior face of the window and the Jamflash®.
- 2.) Filling the joint with a two-component spray polyurethane foam sealant.

LIMITED WARRANTY

The manufacturer warrants this product to be free of defects in workmanship and materials for the life of the structure. If any product proves to contain manufacturing defects that substantially affect its performance, the manufacturer, at its option, will replace it or refund its purchase price. The dollar value of the manufacturer's liability shall not exceed the purchase price of the material in question.