

JAM-EX®

Patent Pending

EXO-TEC Manufacturing, Inc.

330 Libbey Industrial Parkway, Suite 500
Weymouth, MA 20189
(508) 580-0901
www.exo-tec.biz

DESCRIPTION

JAM-EX® is a semi-rigid, 0.06" (1.524 mm) thick, extruded thermoplastic product used to extend the jambs, heads and sills of windows, storefronts, curtainwalls and doors installed in the exterior walls of buildings that include air and vapor barrier systems. JAM-EX® was originally developed for precast concrete panel veneers but can be used to replace wood blocking and metal flashings in masonry veneers in cavity wall construction. The leg dimensions are 2" x 3" and 4" x 5". Custom dimensions and profiles are available.

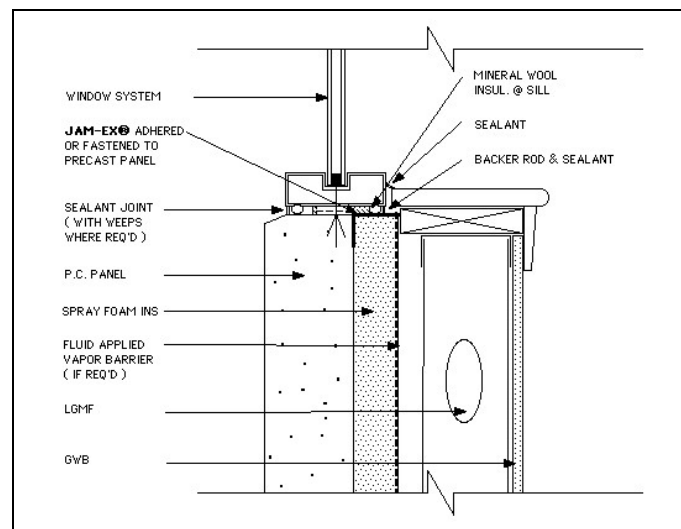
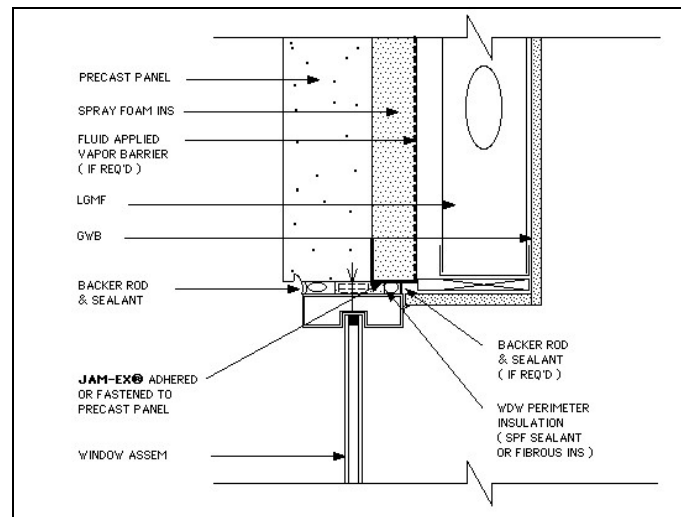
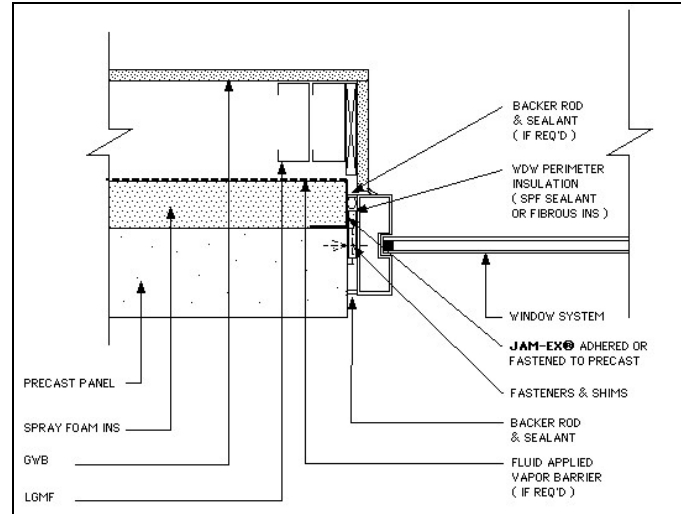
Fabricated from a custom blend of resin modified UV resistant thermoplastic, Jam-Ex® will resist jobsite exposure to chemicals and abuse. This same formulation will last the intended life of your building.

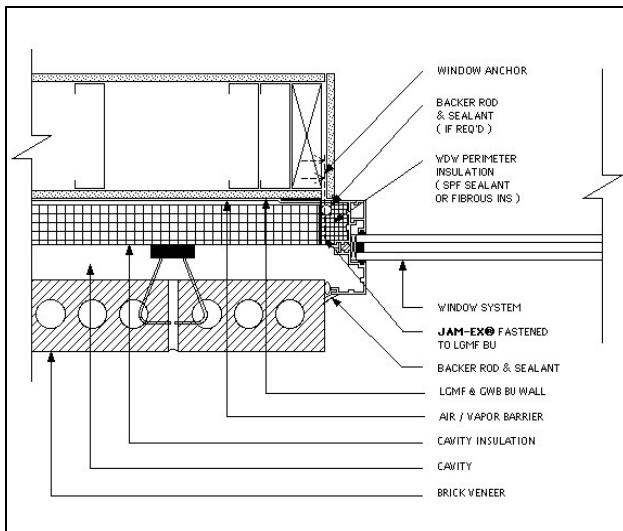
FEATURES & BENEFITS

- Compatible with sealant and spray polyurethane foam insulation materials
- Compatible with self adhering flashings and their accessory materials
- Easily cut to required lengths
- Does not conduct heat like metal flashings so thermal bridges do not occur
- Less costly than metal flashings
- Less costly than pressure treated wood blocking
- Less costly than window panning extensions
- Will not warp like wood blocking
- Fabricated for use with 2", 3" 4" & 5" thick insulation. Additional thicknesses and profiles available with proper lead time.

PACKAGING

Jam-Ex® is fabricated in 10'0" lengths and packaged with 25 pieces per box. Custom lengths and profiles are available with a 60 day lead time.

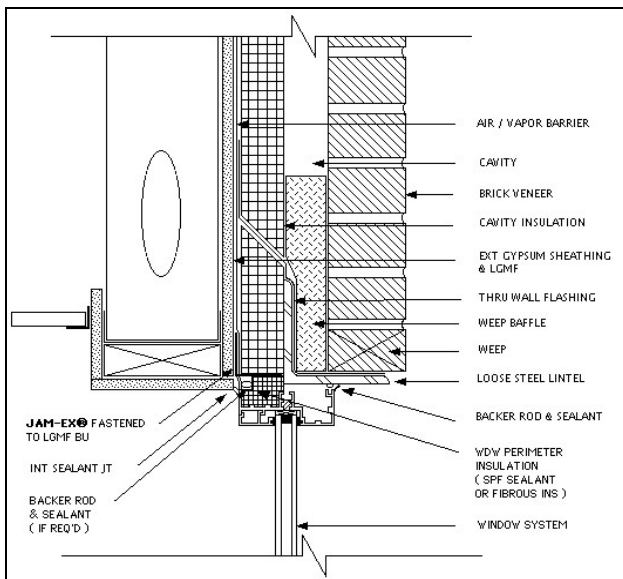




JAM-EX® can be installed in lieu of pressure treated wood blocking that extends into the cavity at window heads and jambs and or metal flashings at these locations in masonry cavity walls that include air and vapor barriers. It's use can also delete the need for window panning and extensions needed in these types of exterior wall systems due to the fact that standard commercial windows are 4 1/2" thick and must lap onto the masonry veneer at least 1". With the actual cavity being 4 3/8" thick, these windows will not span the cavity. The use of JAM-EX® requires a window anchoring system that returns back to the jamb of the back-up wall.

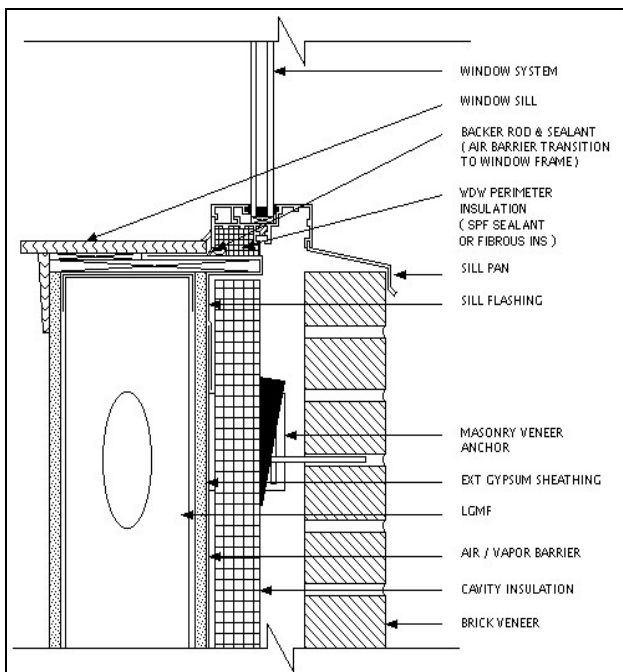
INSTALLATION FOR PRECAST VENEERS

1. Install JAM-EX® at the heads, sills and jambs of the window openings in the veneer with a bead of adhesive or screw type fasteners at 12" O.C.
2. Install SPF insulation air and vapor barrier.
3. Install window assembly.
4. Install window perimeter insulation and, if a separate material, the material used to complete the seal between the window assembly and JAM-EX®.
5. Install the exterior window perimeter sealant.



INSTALLATION FOR MASONRY VENEERS

1. Install JAM-EX® at the heads, sills and jambs of the window openings with screw type fasteners located at 12" O.C..
2. Install the air / vapor barrier on the exterior face of the back-up wall.
3. Install the masonry veneer anchors and cavity insulation.
4. Install the veneer.
5. Install the window assembly.
6. Install window perimeter insulation and, if a separate material, the material used to complete the seal between the window assembly and JAM-EX®.
7. Install the exterior window perimeter sealant.



LIMITED WARRANTY

The manufacturer warrants this product to be free of defects in workmanship and materials for the life of the structure. If any product proves to contain manufacturing defects that substantially affect its performance, the manufacturer, at its option, will replace it or refund its purchase price. The dollar value of the manufacturer's liability shall not exceed the purchase price of the material in question.